



A DECADE OF CHOICE AND COMMUNITY POWER



IMPACT REPORT 2010 – 2020

CONTENTS

3	Our Vision: The Power of Choice	17	MCE Deep Green: The Power of 100% Renewable
4	A Letter from Our CEO	18	MCE Solar One: One of the Bay Area's Largest Public- Private Solar Partnerships
8	Our Commitment Environmental Justice	20	Our Commitment Local Action, Global Change
9	Changemaker: Barbara Postel	21	Changemaker: Senator Mike McGuire
10	Your Dollars at Work: Customer Programs	22	California's Community Choice Energy Movement
12	MCE's Energy Storage Program: Advancing Clean Energy Technology	24	CCAs Working Together: California's Energy Future
13	MCE Solar Charge: Our Mission in Action	25	The Power of Your Dollar: Financial Stability
14	Our Commitment Workforce Development	26	Powering Forward
15	Changemaker: Jonathan Brito	27	Thank You
16	Your Dollars at Work: Renewable Energy Development		

The Power of Choice

Building Together

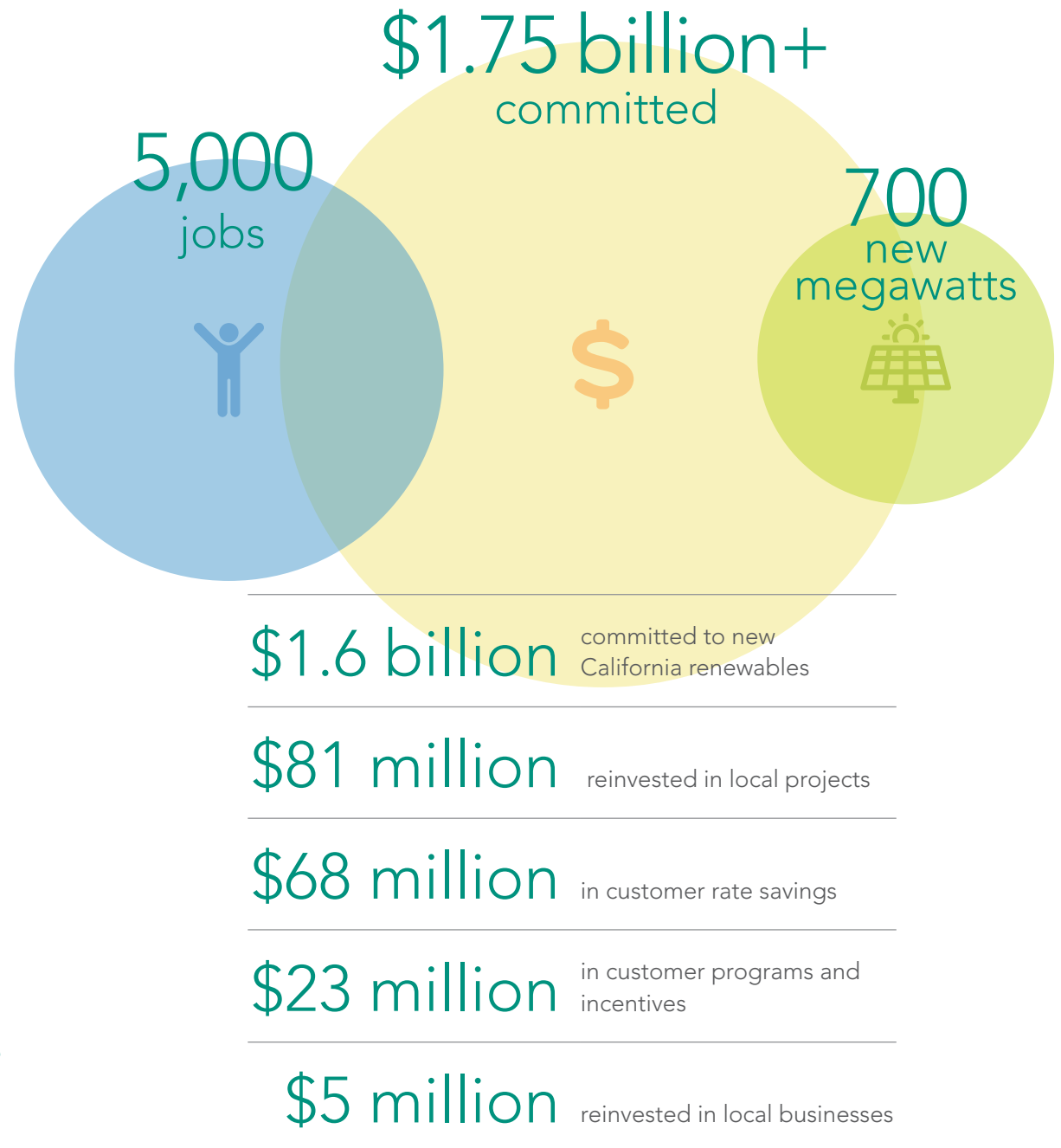
As California's first Community Choice Aggregation (CCA) Program, MCE is a groundbreaking, not-for-profit, public agency that has been setting the standard for energy innovation in our communities since 2010. MCE offers cleaner power at stable rates, significantly reducing energy-related greenhouse gas emissions and enabling millions of dollars of reinvestment in local energy programs.

MCE is a load-serving entity supporting a 1,200 MW peak load. MCE provides electricity service to more than 480,000 customer accounts and more than one million residents and businesses in 36 member communities across four Bay Area counties: Contra Costa, Marin, Napa, and Solano.

MCE's mission is to address climate change by reducing energy-related greenhouse gas emissions with renewable energy and energy efficiency at cost-competitive rates while offering economic and workforce benefits and creating more equitable communities.



◀ **MCE's standard service is 60% renewable since 2017, 90% carbon-free since 2019, and 95% carbon-free starting in 2022.**





A LETTER FROM OUR CEO

MAKING HISTORY TOGETHER

Part of MCE's story began in the early 1990s, when my work with small environmental justice groups in Southern California drove me to seek a big change that would pivot large corporations and polluting industries away from harming communities. These hard-working, passionate groups, like Mothers of East LA, Concerned Citizens of South Central, and the Labor Community Strategy Center, were all fighting seemingly impossible battles to keep polluting industries from impacting their community's health and economy. With polluting industries concentrated in low-income communities and communities of color, the lack of resources and political power made these battles seem insurmountable. Polluting industries might promise local jobs to win approval, but then later fill all jobs from outside the community. Meanwhile, fossil fuel emissions were starting to show impacts around the globe.

By 2001, I had joined the County of Marin and was tasked with finding ways to reduce the County's emissions while local leaders and advocates pushed for system-level impact to build a more sustainable energy future. I saw an opportunity to make a big change that would not only help scale back fossil fuel impacts, but also reduce impacts on low-income communities and communities of color. At that moment, I decided this effort would be worth everything we could muster. While the vision seemed impossible to some, it was backed by the passion of local leaders and community advocates, and it was ultimately the beginning of MCE.

◀ **MCE CEO, Dawn Weisz,
poses for a quick photo at
the California State Capitol
Building in Sacramento.**

Launching a Movement

The passage of California's CCA legislation in 2002 opened the door to turning this vision into reality. Local governments were now allowed to become the electric generation provider for their communities. Some said it was too risky, that it could never be done. Others even deliberately fought against MCE's creation. In fact, the small grants and loans that funded our formation were vastly outmatched by our opponents' spending. Nevertheless, local leaders, environmental advocates, champion businesses, and individuals from all walks of life came together, and on May 7, 2010, MCE started serving our first customers.

Five years of analysis, hundreds of local public meetings, and countless planning documents came together to create the first community choice program in the State of California. We launched service to just under 10,000 customers, but flipping the switch to community power was only the beginning of our movement. The start of MCE service marked a redefining of the energy landscape as we knew it. California consumers could now choose the power of locally governed agencies to secure electricity on their behalf. The concept was contagious and just a few years later, in 2012, MCE moved beyond Marin County with the City of Richmond's request to receive MCE electricity service.

"As a community that has lived directly with the consequences of fossil fuel production since our inception, the power that MCE brings to our community cannot be understated. Having the ability to make decisions on where our power comes from and how our energy dollars are spent means the power to fight the impacts of fossil fuels in our community is tangible and immediate. MCE made that possible for us, when no one else could. "

— Tom Butt, Mayor of Richmond and MCE Board Vice Chair





A LETTER FROM OUR CEO

Innovation and Equity

MCE has continued to grow since that request, now serving 36 communities across Contra Costa, Marin, Napa, and Solano Counties. Our mission to reduce greenhouse gas emissions encompassed providing renewable energy to our customers, offering energy efficiency services and workforce and economic development programs, and most importantly, a focus on creating equitable communities.

The power of an agency like MCE isn't just in the ability to choose where our energy comes from. It's the power to choose how our dollars are spent, and prioritize our communities over profits. Having the ability to enact this type of widespread change is a privilege that we owe to our customers and to all the advocates and leaders that fought for our existence.

Today, just over 10 years later, community choice programs are offering cleaner and more cost-effective solutions to energy problems that were previously thought unsolvable. Our seemingly unattainable vision has become a reality.

"MCE is about more than just keeping the lights on. It's about keeping the power in our customers' hands and addressing some of the inequity that has been a part of the energy industry for too long. Our mission will always be to serve in the best interest of our customers, and we wouldn't be able to do that without including equity and environmental justice in every decision that we make."

— Kate Sears, Marin County Board of Supervisors and MCE Board Chair

Building a Brighter Future for All

MCE would not be the organization we are today without the support from our stakeholders and advocates. We ask all of our supporters, advocates, partners, and customers to continue demanding the best from MCE and from the governments and companies that impact our decision-making processes. Every individual has the power to make a difference, whether that's choosing 100% renewable energy, supporting businesses that are leading with sustainable practices, reducing energy consumption, or asking elected officials to favor environmental policies. Together we built this small agency that has grown into a statewide movement, and together we have the power to build even more.

In 2001, I sat at a small desk in the County of Marin Civic Center, working on sustainability initiatives. On the wall in my office hung this framed quote by Margaret Mead: "Never doubt that a small group of committed people can change the world. Indeed, it is the only thing that ever has." I have found this to be true time and again over my years at MCE. Ultimately, what drives MCE is the same purpose that we all share. We want a better future, for ourselves, for the ones we love, for all things living on this planet. What we have learned from our success is that great things happen when we empower communities to create their own choices.

We thank you.

— Dawn Weisz, MCE CEO



"We'll just keep trying to do the right thing, as we always do, for as long as we can. I imagine that this point is the main theme of all our hard work — to do the best for the Earth and all her children, all the time, with every action and decision we make. We may lose most efforts, but we are engaged in 'right livelihood,' and that's what matters most. Hopefully, some greater purpose is holding all of us as we try to win a better future for our lovely world and her kids."

— Charles McGlashan, MCE
Founding Chair (July 15,
1961 – March 27, 2011)



OUR COMMITMENT TO ENVIRONMENTAL JUSTICE

MCE is committed to creating more equitable communities while addressing climate change through renewable energy, energy efficiency, and local economic and workforce benefits. We serve diverse communities with unique opportunities to build an equitable future.

- ▲ MCE and our partner, American Solar Corporation, celebrate the ribbon cutting of MCE Solar Charge, a solar powered EV charging project. [Flip to page 13](#) to see the details on this project.

ENVIRONMENTAL JUSTICE

As California's first Community Choice Agency (CCA), MCE was started by a community committed to environmental justice and clean energy. MCE is governed by a [board of locally elected officials](#) who reflect the interests of the communities they serve.

As a not-for-profit public agency, our customers can influence our policies and programs through public meetings, ensuring that all people, regardless of race, color, national origin, or income, can influence the development of our agency.

MCE has been committed to environmental justice since our inception, working with our communities to advance equity through our programs and services. By building and buying more renewable energy, we clean up the polluting fossil fuels on our shared grid that disproportionately impact people of color. We know that most aspects of society are affected by racial injustice, and the energy sector is no exception.

Environmental justice is defined by the U.S. Environmental Protection Agency as "the fair treatment and meaningful involvement of all people regardless of race, color, national origin, or income, with respect to the development, implementation, and enforcement of environmental laws, regulations, and policies. This goal will be achieved when everyone enjoys the same degree of protection from environmental and health hazards, and equal access to the decision-making process to have a healthy environment in which to live, learn, and work."

231 new customer solar installations constructed by GRID Alternatives and MCE

CHANGEMAKER

Barbara Postel

[Barbara Postel](#) lives in Atchison Village, a mutual homes association (cooperative) in Richmond, CA that was originally built as housing for Kaiser shipyard workers during World War II. Today it is a diverse, 450-unit, multigenerational community with a democratically elected Board of Directors.

"I moved to Atchison Village in 2010 and was delighted to find opportunities to contribute here, including a water-saving project upgrading old toilets to high-efficiency models. I also worked with GRID Alternatives in partnership with MCE so that income-qualifying residents in Atchison Village could install free solar arrays. Initially my application was rejected because we don't have deeds to our units illustrating home ownership because we cooperatively own the whole property. So I emailed our mayor, Tom Butt, and he emailed right back. Within a week Sacramento had rephrased their qualification terminology to let us be eligible. The Board embraced giving Village members this opportunity, and now there are 100 units in the Village with free solar arrays on their roofs, and 25 more are scheduled to have them installed this year.

Becoming more environmentally active can be really fun. I volunteered with GRID Alternatives and got to help on a rooftop solar installation — super fun! A few years ago, I helped on a historical ecology study at the John Muir National Historic Site — I learned a lot and had fun, too. These projects really lit my fire. There are many, many people doing such good work and I appreciate having had these opportunities to join them."



\$6,000,000 allocated to [energy resilience for vulnerable customers](#)

\$4,000,000 allocated to building [EV charging infrastructure](#) for multifamily properties and workplaces

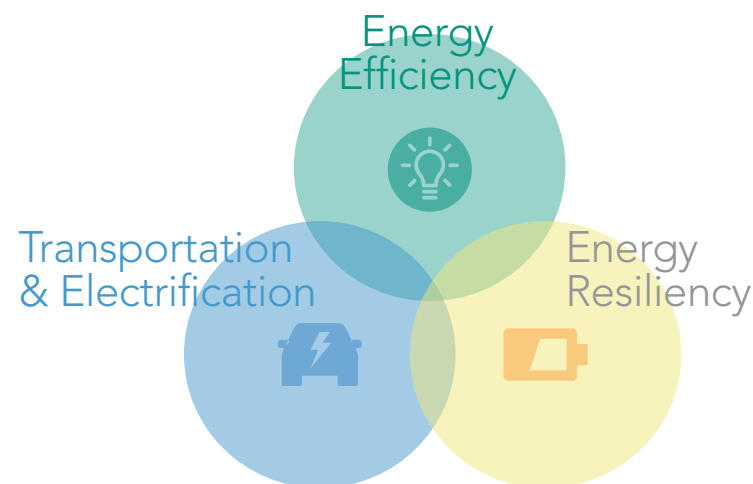
\$2,440,000 energy efficiency rebates disbursed

\$725,000 allocated to [income-qualified solar rebates](#)

\$300,000 allocated to income-qualified [EV rebates](#)

MCE Programs Focus

As a not-for-profit public agency, MCE has focused on community reinvestment across our program offerings, considering the larger picture of equity and sustainability.



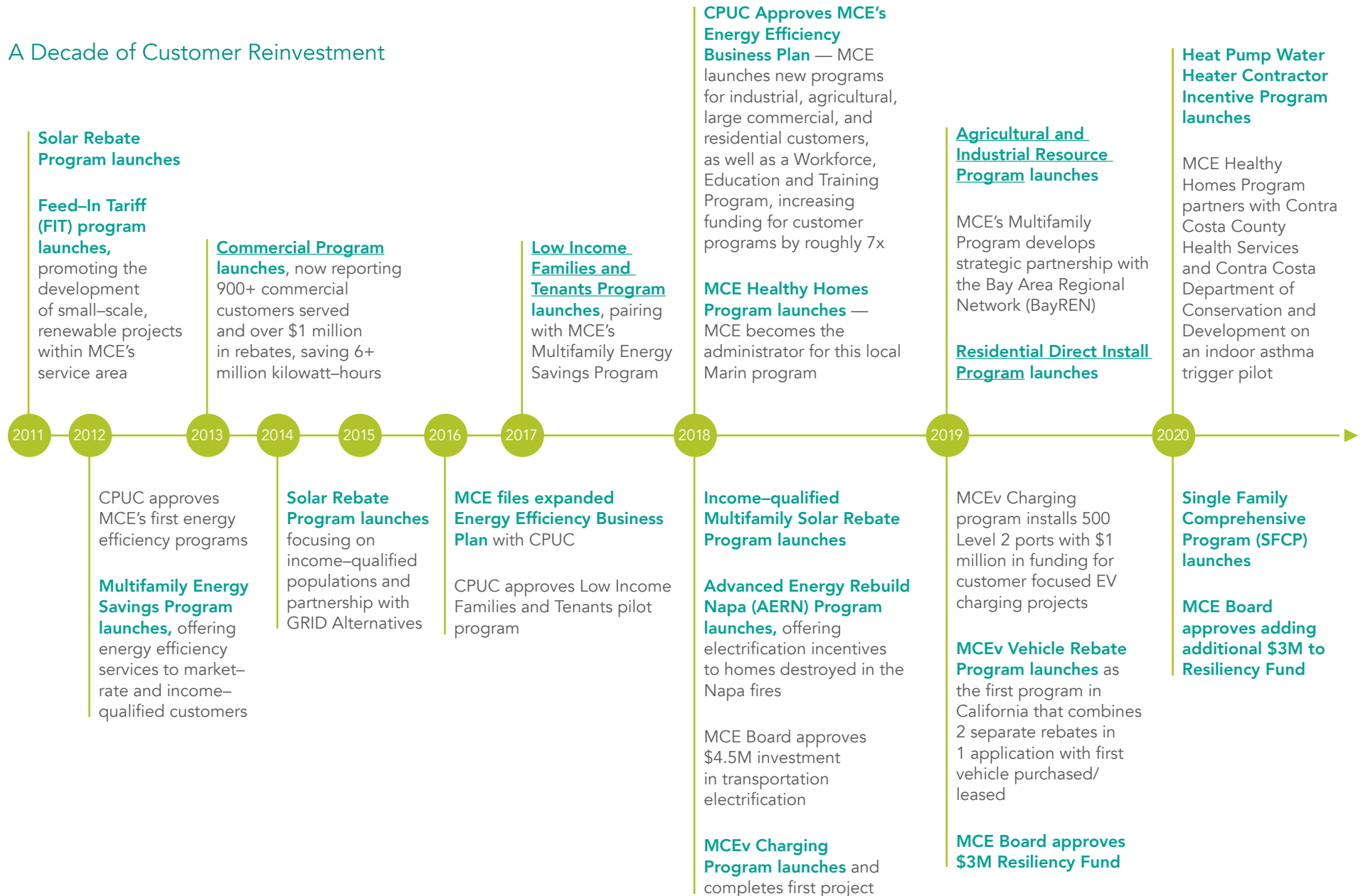
EV CASE STUDY — CITY OF RICHMOND

- 6 ports installed
- \$15,000 in rebates
- Publicly available charging stations
- MCEv program charging rebates covered 89% of cost
- Four hours of free EV charging per session to city employees

"I encourage others to utilize these MCE programs as they were very instrumental to increase our service deliverables to the public."

— Denée Evans, Office of the City Manager, Richmond, CA

A Decade of Customer Reinvestment





MCE's Energy Storage Program

Advancing Clean Energy Technology

MCE created a [\\$6 million resiliency fund](#) to help alleviate grid outages that threaten our community's safety, health, and welfare, and disproportionately affect vulnerable populations. In addition, the Marin Community Foundation awarded MCE a two-year \$750,000 grant through the Buck Family Fund to install solar plus storage at nonprofit, critical facilities, and affordable, multifamily properties in Marin County. MCE's goal is to use advanced clean energy technologies like battery storage to keep power flowing during Public Safety Power Shutoff (PSPS) events and other outages, while minimizing the use of carbon-emitting generators and fossil fuel technologies.

\$6 million resiliency fund prioritizing critical facilities and vulnerable customers

VULNERABLE CUSTOMERS

MCE distributed 100 portable, [off-grid batteries](#) in partnership with regional Centers for Independent Living at no cost to customers with a life-sustaining medical need for power.

- ◀ **MCE staff unloads home batteries before handing them off to our community partners for delivery to customers.**

MCE Solar Charge

Our Mission in Action

MCE's tenth local renewable project is a great example of MCE's mission in action. Built by a local workforce compensated at prevailing wages, the 80 kilowatt solar system powers 10 Level 2 electric vehicle (EV) charging ports that are open to the public at MCE's San Rafael office. The project will generate approximately 120,000 kWh per year, supporting up to 10 charging sessions at a time and offsetting usage in MCE's adjacent office building.

[MCE Solar Charge](#) stations provide 100% renewably powered EV charging in two ways:

- When the sun is shining, the charging stations will draw energy from the solar array.
- Any other time, MCE's Deep Green 100% renewable energy will be used to support electricity needs with a mix of 50% California wind and 50% California solar.

MCE Solar Charge was built by Marin-based American Solar Corporation, with EV stations funded in part by the Transportation Authority of Marin and the Bay Area Air Quality Management District.

MCE is also planning to install battery storage integrated with this solar project, allowing our San Rafael office to be off the grid when necessary and used as a resource center during PSPS events.

The MCE Solar Charge team gathers to celebrate at the MCE Solar Charge ribbon cutting. ►



"MCE's commitment to paying prevailing wages and hiring locally sets an important standard that not only supports the local economy by using local vendors, but also creates a standard that can be replicated by other CCAs and utilities across the state. As a [solar panel] and [electric vehicle charging station] installer, we're proud to play a part in MCE's growth as they bring green energy to homes, businesses, and even transportation."

— Charlie Gregg, Director of Commercial Projects, American Solar Corporation



OUR COMMITMENT TO WORKFORCE DEVELOPMENT

MCE's Sustainable Workforce & Diversity Policy outlines our commitment to diversity and inclusion through contracting for power resources, procuring goods and services, and implementing hiring initiatives. The policy calls for quality training, apprenticeship, and pre-apprenticeship programs; fair wages; and the use of direct hiring practices that promote diversity in the workplace.

▲ Jeff Lifur (Cenergy Power), Fred Lucero (RichmondBUILD), and Jonathan Brito (RichmondBUILD) at the MCE Solar One Ribbon Cutting. [Flip to page 18](#) to learn about this groundbreaking project.

WORKFORCE DEVELOPMENT

MCE's workforce policy is implemented through MCE's hiring practices and in our suite of procurement and customer programs. All MCE Feed-In Tariff projects must meet prevailing wage and 50% local hire requirements. These fair labor practices ensure that projects built for MCE in our service area are furthering the green collar economy with [equitable workforce opportunities](#).

Workforce Development Achievements

\$440,000 reinvested

\$810,000 allocated to local projects

2,250+ job hours and 60 people trained

Our Partners



IBEW Local 302

Certify and Amplify Workshops

MCE leads [annual workshops](#) to connect our local businesses to the State of California's Supplier Diversity Clearinghouse. Eligible businesses can apply to certify through this utility contracting program to amplify their business. Current eligibility extends to woman-owned, disabled veteran-owned, LGBTQ-owned, and minority-owned businesses.

CHANGEMAKER

Jonathan Brito

[Jonathan Brito](#) is an instructor with RichmondBUILD, a Richmond-based academy focused on developing the skills necessary for people to find successful careers in construction and green-collar jobs. In 2017, Mr. Brito worked on the construction of MCE Solar One, a 10.5 MW solar farm located on a 65-acre brownfield site in Richmond, CA.

"RichmondBUILD started off as an anti-violence program, and we evolved into what is now a 12-week pre-apprenticeship program. We help people gain entry into union apprenticeships, and we also try to help them find careers in the green energy business. We've helped a lot of our people here to find not only jobs, but careers. RichmondBUILD is important because a lot of the people that we serve are underprivileged, a lot of people were formerly incarcerated, and a lot of people don't have degrees or college backgrounds.

As soon as I found out MCE was going to build a solar farm in Richmond, I called everyone I knew asking how I could get [hired] on the project. I'm trying to make my community a better place, and what better way than to actually build a solar farm in my backyard. Now that I'm working for RichmondBUILD and giving back to my community, I'm also going back to college. Working on MCE Solar One and working for RichmondBUILD has definitely changed my life. I didn't think I would be here, that's for sure. It's made a difference in my life, and I hope that I can be that light for others."





Renewable Energy Development

MCE's [Feed-In Tariff \(FIT\) and FIT Plus programs](#) incentivize the development of small-scale renewable energy projects (like solar, wind, or biomass up to five megawatts) within our service area, directly supporting local jobs and economic growth. These programs have been expanded to include requirements for a more holistic approach to renewable energy, including:

- Requiring energy storage to ensure that we can strategically store and deploy solar energy
- Offering additional incentives for urban in fill and non solar renewable projects, incentivizing sustainable land use practices and new technologies
- Mandating [pollinator-friendly habitat throughout solar project sites](#), to benefit the local ecosystem while producing energy that's good for our climate

◀ **31 MW local projects in our service area.**



LOCAL PROJECT CASE STUDY — COOLEY QUARRY

- 1 MW solar farm
- Built on an abandoned quarry brownfield site
- Supplies power for up to 300 customers each year

◀ **One of MCE's 100% renewable service options, Local Sol offers 100% locally-sourced solar from a project in Novato, CA.**



[Learn more](#)

MCE Deep Green

The Power of 100% Renewable

MCE's Deep Green service option is a 100% renewable electricity service generated from 50% wind and 50% solar resources in California. Over 11,000 residential, commercial, and municipal customers have opted up to Deep Green, which costs \$5 more per month for an average residential customer.

Deep Green customers are not only investing in California renewables, but also directly in programs and projects located in MCE's service area. Half of the penny per kilowatt-hour premium that customers pay is allocated to MCE's Local Renewable Energy and Program Development Fund. This fund helps pay for projects like MCE Solar One and programs like our income-qualified solar and electric vehicle rebates. Currently, the fund has over \$6 million allocated towards these programs which benefit MCE customers directly.



[Learn more](#)

\$850,000+

was contributed to the development of MCE Solar One from Deep Green customers

Deep Green is supported by several project partners, advocates, and customers, including Sustainable Lafayette, which helped increase their city's opt up rate by 60% through a successful community-led campaign and Clif Family Winery, a Deep Green Champion that produces Solar Grown™ Honey from beehives at their solar arrays. Photo by Center for Pollinators in Energy. ►



MCE SOLAR ONE

One of the Bay Area's Largest Public–Private Solar Partnerships

The 65-acre [MCE Solar One project](#) was built in partnership with the City of Richmond and RichmondBUILD, a local workforce development agency. Construction of the 10.5 megawatt project included a 50% local hire requirement. Since construction was completed in 2018, Solar One has produced enough energy each year to power approximately 4,000 homes.

On–Site Training for Green–Collar Jobs

Workforce development agency, RichmondBUILD, has successfully graduated hundreds of students and placed an impressive 80% of its graduates into well-paying jobs. Program participants are from low-income households and are trained in high growth, high wage construction and renewable energy jobs.

Program and Union partners; Overaa Construction including UBC (Local 152) & Laborers (Local 324), Net Electric including IBEW (Local 302) & Laborers Union (Local 324), Newtron Group, Inc. including IBEW (Local 302), Laborer's Union (Local 324) & Lineman's Union (Local 1245), Contra Costa Electric including Laborers Union (Local 324), IBEW (Local 302), Linemen's (Local 1245), Goebel Construction including Laborers Union (Local 324), Operating Engineers (Local 3) & Steamfitters (Local 342), S–Power, Cenergy Power, and Chevron.

“MCE Solar One produces enough renewable energy to serve nearly six percent of Richmond’s electricity load. I’m proud that we’re not only generating electricity close to home, but this project has also given us a way to model the types of collaborations we need — from the public and private sector, as well as local unions — to combat climate change.”

— Tom Butt, Mayor of Richmond and MCE Board Director

MCE SOLAR ONE, RICHMOND, CALIFORNIA

MCE Solar One Awards

- 2018** California Environmental Protection Agency: Governor's Environmental and Economic Leadership Award
- 2018** Sustainable Contra Costa Leadership in Sustainability Awards: Sustainable Economics Award
- 2020** Acterra Business Environmental Awards: Environmental Project Award

▼ Fred Lucero, Richmond Mayor Tom Butt, RichmondBUILD graduates, and solar construction workers at the MCE Solar One project.



"RichmondBUILD was very excited to be able to partner with MCE on this project along with the City of Richmond, sPower, Chevron, and Cenergy Power. This project represents one of the largest public-private solar partnerships in the Bay Area and provided our program participants — who are from low-income households and largely minorities — with training in green-collar jobs that will help build a brighter future for themselves and their families."

— Fred Lucero, RichmondBUILD Program Manager





OUR COMMITMENT TO LOCAL ACTION, GLOBAL CHANGE

In 2002, MCE was a bold idea to help the planet and our communities simultaneously. Our vision was to provide alternatives to the costly global warming impacts of fossil fuels by investing our revenues in renewable energy projects, good-paying jobs, and energy efficiency programs. This new model would deliver more than just clean power. It would offer the power of choice, the power of a transparent, publicly accountable agency, and the power of local economic reinvestment.

▲ Shalini Swaroop, MCE General Counsel and Director of Policy has focused her career on environmental and social justice and empowering historically marginalized communities.

Climate change is a global issue but we all must take action in order to make a difference. By offering greater amounts of renewable energy, MCE has helped 36 communities regain power over their energy choices, including 26 municipalities that have chosen to utilize 100% renewable energy with Deep Green. We will continue to enable our customers' power of choice, the ability to make decisions that improve their own quality of life, while benefiting the planet and the communities most heavily impacted by fossil fuel consumption.

MCE's New California Renewables

60% minimum renewable since 2017, meeting state goals 13 years ahead of schedule

90% carbon-free since 2019 and 95% carbon-free starting in 2022

340,000+ metric tons of greenhouse gas emissions reduced

31 megawatts of local projects

677 megawatts

5,000 jobs created

1.4 million labor hours created

\$1.75+ billion committed

Senator Mike McGuire

Senator McGuire is a native of the Alexander Valley, and has been in public service since winning a seat on the Healdsburg School Board at the age of 19. He has represented District 2 (Marin County and the North Coast) in the California State Senate since 2014.

Senator McGuire has been a champion for CCAs since his election to the Senate, and has consistently advocated for CCAs in the Senate Energy, Utilities and Communications Committee. The Senator has helped to build a coalition of elected officials who represent districts served by CCAs, helping to build a critical base of supportive champions within the Senate.

In 2019, Senator McGuire was instrumental in the defeat of AB 56 (Garcia) in the Senate Energy, Utilities and Communications Committee, a bill that would have threatened the procurement autonomy of CCAs. Perhaps most importantly, Senator McGuire is a tireless champion for the rural communities that have been heavily impacted by wildfires in the last several years, and has been at the forefront of the call for reforming PG&E. Senator McGuire received MCE's first Climate Leadership Award in 2020.



MCE'S NEW CALIFORNIA RENEWABLE ENERGY PROJECTS



California Community Choice

California Strong

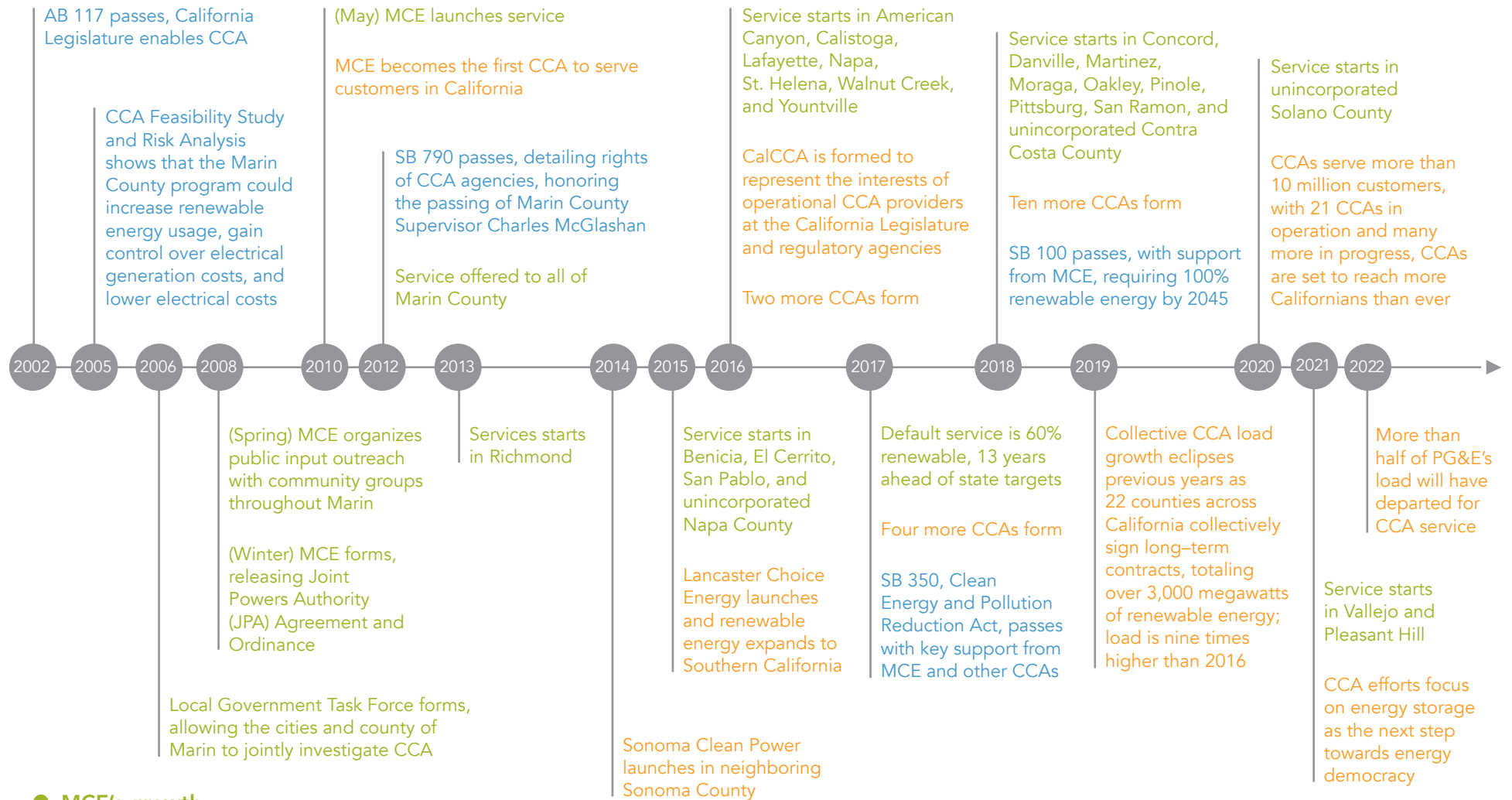
MCE's impact stretches beyond our service area, into the entire California economy. We've supported labor around the state through new renewable energy development and have continued to support other communities exploring energy independence. As California's first CCA, MCE led the way for the growth of CCAs around the state. Today there are 21 programs and counting, responsible for over 170 communities, 10 million customers, and 3,600 megawatts of new clean energy.

California Community Choice Association (CalCCA)

[CalCCA](http://cal-cca.org) formed in 2016 with a mission to create a legislative and regulatory environment that supports the development and long-term sustainability of locally-run CCA electricity providers in California. They serve their members and strengthen the CCA collective voice through education, technical guidance and regulatory and legislative advocacy.



California's Community Choice Energy Movement



- MCE's growth
- CalCCA's milestones
- California Legislature milestones



CCAs Working Together

California's Energy Future

CCAs work collaboratively to advocate on behalf of our communities and advance policies that support our clean energy future. In 2020, MCE partnered with 12 other CCAs to issue a joint Request for Information for energy storage technologies offering a minimum of eight hours of power. This request is the first step in identifying the resources that can meet California's long-term energy needs. By working together, CCAs are better able to plan for and meet our customers' energy needs in a way that is cost-effective and environmentally beneficial.

Julia Prochnik, Executive Director of the Long Duration Energy Storage Association of California, said this effort is a "necessary first step in developing a viable market in California for long-duration energy storage, which will be critical to helping the state fight climate change and creating new jobs and economic opportunity for communities across the state."

CCAs can be stronger together, and MCE is proud to work with our partner agencies across the state to offer our customers better energy choices that will create a clean energy future we can all be proud of.

◀ **CCAs from around the state come together to learn and share knowledge at the 2019 CalCCA Annual Conference in Redondo Beach.**

Financial Stability

MCE was the first CCA to receive an investment-grade credit rating, as well as the first to receive two credit ratings. Both rating agencies evaluate MCE as an investment-worthy entity based on demonstrated evidence: the business model is working on sound operational and financial evidence, full recovery of costs through independent local rate-setting, strong financial flexibility from positive cash flows, and adequate liquidity levels. The agencies expect that MCE will meet and maintain a reserve target of 140 days cash on hand.

Moody's

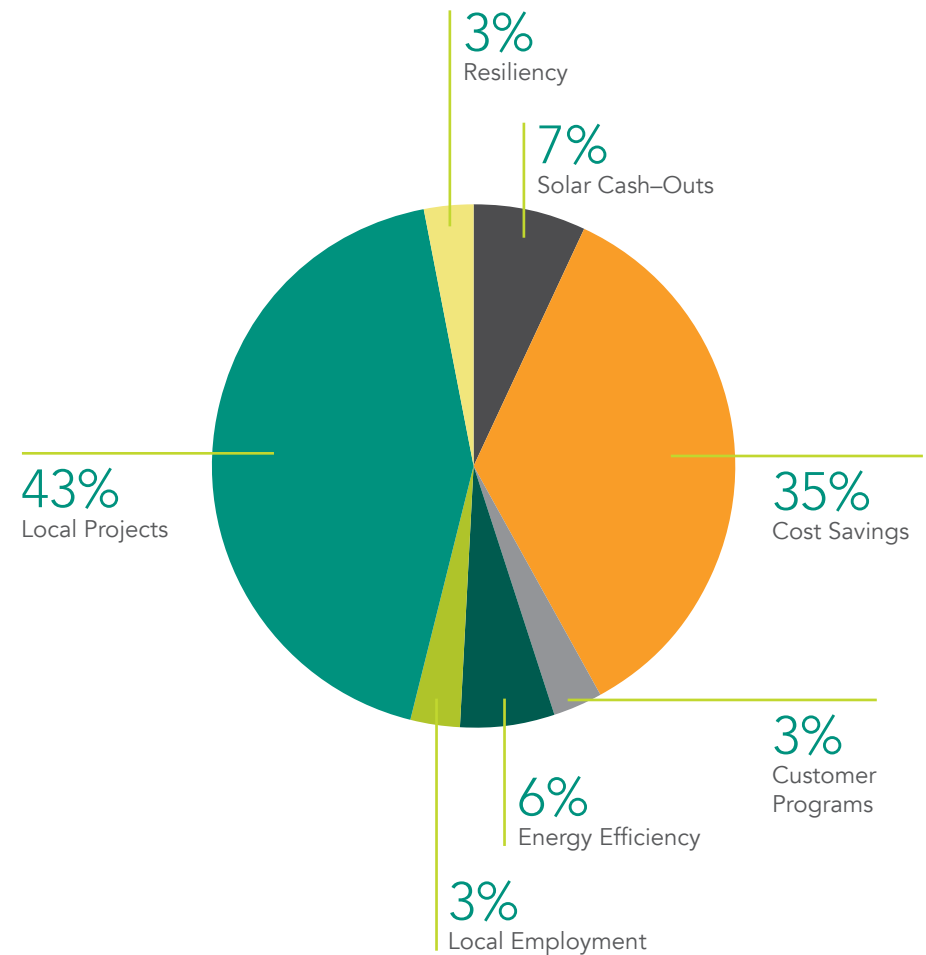
Moody's Investor Service assigned MCE a [Baa2 Issuer Rating with a Stable rating outlook in 2018](#), and confirmed the rating in 2019.

Fitch Ratings

Fitch Ratings assigned MCE a [BBB Stable Issuer Default Rating in 2019](#).

In 2020, MCE increased our target liquidity reserve from 140 days cash on hand to 240 days, and our target net position from 40% to 60% of operating expenses. MCE expects to meet this new target by March 31, 2022.

\$180,000,000+ in local reinvestment over 10 years



Our Commitment to You

A just and successful transition to an equitable energy future can only happen if we pay special attention to those particularly impacted by fossil fuels. As we step into our second decade of service, MCE is committed to the following:

► Strengthening energy resilience in our communities

Our Energy Storage Program allocates \$6 million to help keep our most vulnerable customers safe during outages by addressing the safety, reliability, health and welfare impacts of outages while supporting the State's renewable energy goals.

► Investing in decarbonizing our transportation and buildings

Decarbonization means transitioning our cars, homes, businesses, and public transportation away from fossil fuel-dependent technologies and into clean energy solutions like electric vehicles and buses, as well as building electrification that utilizes 100% renewable energy.

► Continuing to develop innovative community energy programs

We will continue to provide our customers with community-focused energy solutions including our solar plus storage solutions, Feed-In Tariff program incentivizing local renewable development, and income-qualified solar and EV rebates.

► Ensuring that local workforce and diverse community benefits are anchored in all aspects of our work

We are committed to expanding our equity outreach with programs like our local-hire and prevailing-wage requirements. Supporting our communities means taking a hard look at how we can best address those who are most impacted by climate change and fossil fuels.

We are committed to our mission, our communities, and to you, our customers. We will always look to be better, do more, and work harder for all of you who fight everyday for a brighter future for us all.

THANK YOU

WE ARE MCE BECAUSE OF YOU.

- Creating Green Energy Jobs
- Building Energy Resilient Communities
- Bringing Clean Energy to Local Communities
- Providing Cleaner Energy Choices

THANK YOU TO OUR:

Community leaders and advocates

Community Power Coalition members

Deep Green Champions

Elected officials representing our 36 member communities

Founding advocates — notably the late Barbara George and Charles McGlashan

Municipal staff

And the over 1 million customers that make MCE and our community-based programs possible

Top to bottom, left to right: Energize Richmond program participants, Hoing Winery Deep Green Champion, Lotus Deep Green Champion, Supervisors Hannigan and Vasquez from Solano County, former City of Concord staff Michael Cass, Sustainable Rossmoor advocates. ►



OUR COMMITMENT:

To listen, to learn, and to always do our best to reflect the needs of our community.



1125 Tamalpais Ave.
San Rafael, CA 94901

Stay in touch: @mceCleanEnergy



 Printed on 100% post-consumer waste and responsibly-forested paper with soy ink.

© 2020 MCE. All rights reserved. 08042020