



MARIN COUNTY | NAPA COUNTY | UNINCORPORATED CONTRA COSTA COUNTY
BENICIA | CONCORD | DANVILLE | EL CERRITO | LAFAYETTE | MARTINEZ | MORAGA
OAKLEY | PINOLE | PITTSBURG | RICHMOND | SAN PABLO | SAN RAMON | WALNUT CREEK

Agenda Page 1 of 1

Executive Committee Meeting Friday, June 7, 2019 12:00 P.M.

Charles F. McGlashan Board Room, 1125 Tamalpais Avenue, San Rafael, CA 94901
Mt. Diablo Room, 2300 Clayton Road, Suite 1150, Concord, CA 94920

1. Roll Call/Quorum
2. Board Announcements (Discussion)
3. Public Open Time (Discussion)
4. Report from Chief Executive Officer (Discussion)
5. Consent Calendar (Discussion/Action)
 - C.1 Approval of 5.3.2019 Meeting Minutes
 - C.2 First Amendment to the Third Agreement with The Energy Alliance Association
6. Proposed MCE Rate Changes for July 1, 2019 (Discussion/Action)
7. Policy Update (Discussion)
8. Review Draft 6.20.19 Board Agenda (Discussion)
9. Committee Matters & Staff Matters (Discussion)
10. Adjourn



Agenda material can be inspected at 1125 Tamalpais Avenue, San Rafael, CA 94901 on the Mission Avenue side of the building and at One Concord Center, 2300 Clayton Road, Concord, CA 94520 at the Clayton Road entrance. The meeting facilities are in accessible locations. If you are a person with a disability and require this document in an alternate format (example: Braille, Large Print, Audiotape, CD-ROM), you may request it by using the contact information below. If you require accommodation (example: ASL Interpreter, reader, note taker) to participate in any MCE program, service or activity, you may request an accommodation by calling (415) 464-6032 (voice) or 711 for the California Relay Service or by e-mail at djackson@mceCleanEnergy.org not less than **four work days** in advance of the event.

DRAFT

MCE EXECUTIVE COMMITTEE MEETING MINUTES

Friday, May 3, 2019

12:00 P.M.

**Mt. Diablo Room
2300 Clayton Road, Suite 1150
Concord, CA 94520**

**Charles F. McGlashan Board Room
1125 Tamalpais Avenue
San Rafael, CA 94901**

Present: Denise Athas, City of Novato (*San Rafael*)
Sloan Bailey, Town of Corte Madera (*San Rafael*)
Tom Butt, City of Richmond (*San Rafael*)
Kevin Haroff, City of Larkspur (*Concord*)
Bob McCaskill, City of Belvedere (*San Rafael*)
Kate Sears, County of Marin (*San Rafael*)
Renata Sos, Town of Moraga (*Concord*)

Absent: Lisa Blackwell, Town of Danville
Barbara Coler, Town of Fairfax
Ford Greene, Town of San Anselmo
Tim McGallian, City of Concord

Staff

& Others: Jessica Brooks, Assistant Board Clerk (*San Rafael*)
Sherry Clark, Administrative Services Assistant (*Concord*)
John Dalessi, Operations and Development (*San Rafael*)
Kirby Dusel, Resource Planning & RE Programs (*San Rafael*)
Darlene Jackson, Clerk of the Board (*Concord*)
Vicken Kasarjian, Chief Operating Officer (*San Rafael*)
Justin Kudo, Strategic Analysis and Rates Manager (*San Rafael*)
Garth Salisbury, Director of Finance (*San Rafael*)
Taylor Sherman, Internal Operations Assistant (*San Rafael*)
Dawn Weisz, Chief Executive Officer (*San Rafael*)

1. Roll Call

Chair Butt called the regular Executive Committee meeting to order at 12:01 p.m. with quorum established by roll call.

2. Board Announcements (Discussion)

There were none.

DRAFT

3. Public Open Time (Discussion)

Chair Butt opened the public comment period and there were no comments.

4. Report from Chief Executive Officer (Discussion)

CEO, Dawn Weisz, reported the following:

- Thanked the Board and members of the public for attending April 25th Ribbon Cutting MCE Solar Charge: Grand Opening & Earth Day Celebration
- Thanked Board members and others that attended the American Canyon 3MW Solar Fit Groundbreaking on April 5th
- Early stages of planning for the 2019 Board Retreat have begun. Potential Retreat dates are Wednesday, September 18 or Wednesday September 25th. A calendar invitation will be sent out once a date has been confirmed.
- Ms. Weisz extended an invitation to the Committee to join MCE staff in the Clean Cars for All Electric Vehicle Showcase on May 29th in Richmond, CA.

5. Consent Calendar (Discussion/Action)

- C.1 Approval of 3.1.19 Meeting Minutes
- C.2 Sixth Agreement with the Association for Energy Affordability
- C.3 Approval of CalCCA Membership Dues for Fiscal Year 2019-20

Chair Butt opened the public comment period and there were no comments.

Action: It was M/S/C (Sears/Athas) **to approve Consent Calendar Items C.1 through C.3.** Motion carried by unanimous vote. (Absent: Directors Blackwell, Coler, Greene, and McGallian).

6. MCE Ratesetting (Discussion/Action)

Justin Kudo, Strategic Analysis and Rates Manager, John Dalessi, Operations and Development and Garth Salisbury, Director of Finance presented this item and addressed questions from Committee members.

Chair Butt opened the public comment period and there were no comments.

Action: It was M/S/C (McCaskill/Haroff) to **recomend that the Board 1). adopt rates to achieve a .03% customer savings to all customer classes effective July 1, 2019 and 2). authorize staff to adjust rates further when needed to maintain the .03% customer savings going forward, including implementing EV2A, Standby and new Time of Use rates.** Motion carried by unanimous vote. (Absent: Directors Blackwell, Coler, Greene, and McGallian).

7. Policy 013: Reserve Policy (Discussion)

Garth Salisbury, Director of Finance, presented this item and addressed questions from Committee members.

DRAFT

Chair Butt opened the public comment period and there were no comments.

Action: No action required.

8. Additional Information regarding Resolution 2019-01: Investment Policy (Discussion)

Garth Salisbury, Director of Finance, presented this item and addressed questions from Committee members.

Chair Butt opened the public comment period and there were no comments.

Action: No action required.

9. Update to MCE Employee Benefits Contributions (Discussion)

Lindsay Meehan, Human Resources Associate, presented this item and addressed questions from Committee members.

Chair Butt opened the public comment period and there were no comments.

Action: No action required.

10. Committee & Staff Matters (Discussion)

Chair Butt opened the public comment period and there were no comments.

11. Adjournment

Chair Butt adjourned the meeting at 1:43 p.m. to the next scheduled Executive Committee Meeting on June 7, 2019.

Tom Butt, Chair

Attest:

Dawn Weisz, Secretary



June 7, 2019

TO: MCE Executive Committee

FROM: Joey Lande, Customer Programs Manager

RE: Proposed First Amendment to the Third Agreement with The Energy Alliance Association (TEAA) (Agenda Item #05-C.2)

ATTACHMENT: Proposed First Amendment to the Third Agreement with TEAA

Dear Executive Committee Members:

SUMMARY:

The proposed First Amendment to the Third Agreement with The Energy Alliance Association (TEAA) would provide a continuation of services to MCE for implementation of the commercial energy efficiency program through the end of 2019.

Background

MCE has contracted with TEAA for support of its commercial energy efficiency program since March 2017. In December 2018, the Executive Committee approved the Third Agreement with TEAA for the continuation of commercial energy efficiency services through June 30, 2019.

The proposed First Amendment to the Third Agreement extends services through December 31, 2019, increases the maximum contract value from \$196,000 to \$328,000 and allows for a higher average incentive rate of \$0.28/kWh to encourage program participation and increase customer benefits. The First Amendment to the Third Agreement proposes a total savings goal of 1,400,000 net kWh through the end of 2019.

Fiscal Impacts: Expenditures related to the proposed First Amendment to the Third Agreement would be funded completely from the energy efficiency program funds allocated by the CPUC.

Recommendation: Approve the First Amendment to the Third Agreement with TEAA.

FIRST AMENDMENT TO THIRD AGREEMENT BY AND BETWEEN MARIN CLEAN ENERGY AND THE ENERGY ALLIANCE ASSOCIATION (TEAA)

This FIRST AMENDMENT is made and entered into on June 7, 2019, by and between MARIN CLEAN ENERGY, (hereinafter referred to as "MCE") and THE ENERGY ALLIANCE ASSOCIATION (TEAA), (hereinafter referred to as "Contractor").

RECITALS

WHEREAS, MCE and Contractor entered into an agreement on December 7, 2018, to provide program implementation services to support MCE's nonresidential energy efficiency program ("Agreement"); and

WHEREAS, Section 4 and Exhibit B to the Agreement provided for Contractor to be compensated in an amount not to exceed \$196,000 for the program implementation services described within the scope therein; and

WHEREAS the parties desire to amend the Agreement to increase the contract amount by \$133,000 for total consideration not to exceed \$328,000; and

WHEREAS, Section 5 of the Agreement stated the Agreement shall terminate on June 30, 2019; and

WHEREAS the parties desire to amend the Agreement to extend the time of the Agreement; and

WHEREAS, Exhibit A to the Agreement specified the tasks Contractor will complete for the program implementation services as described in the scope therein; and

WHEREAS the parties desire to amend the Agreement to modify the scope of work of the Agreement.

NOW, THEREFORE, the parties agree to modify Sections 4 and 5 and Exhibits A and B as set forth below.

AGREEMENT

1. Section 4 is hereby amended to read as follows:

MAXIMUM COST TO MCE:

In no event will the cost to MCE for the services to be provided herein exceed the maximum sum of **\$328,000**.

2. Section 5 is hereby amended to read as follows:

TIME OF AGREEMENT:

This Agreement shall commence on **January 1, 2019**, and shall terminate on **December 31, 2019**. Certificate(s) of Insurance must be current on the day the Agreement commences and if scheduled to

lapse prior to termination date, must be automatically updated before final payment may be made to Contractor.

- The program overview timeline of Exhibit A is hereby amended to read as follows:

Timeline: January 1, 2019 through December 31, 2019

- The second paragraph of Task 2 of Exhibit A is hereby amended and replaced in its entirety to read as follows:

The average customer incentive payments at the portfolio level for Contractor are to be at \$.28/kWh (net first year energy savings), and \$1.50/therm (net first year energy savings), for projects beginning after June 7, 2019. Average incentive rates are subject to change as directed by MCE and noticed to Contractor.

- Exhibit B is hereby amended and replaced in its entirety to read as follows:

For program implementation services provided under this Agreement, MCE shall pay Contractor a performance fee for net kWh savings claimed with the CPUC, in accordance with the following payment schedule:

2019 Implementation Budget for services delivered between January 1 and December 31, 2019				
<i>Cost Item</i>	<i>Unit Cost</i>	<i>Unit</i>	<i>Quantity</i>	<i>Total Cost (NTE)</i>
Program Performance Fees* per net kWh saved	\$0.22	kWh	1,400,000	308,000
Program Performance Fees* per net therm saved	\$0.80	therm	25,000	20,000
Total Contract (NTE)				\$328,000
*Performance fees will be invoiced and paid on a monthly basis, with an annual true-up to account for revisions to final savings claims, based on MCE, EM&V and/or CPUC review. This payment is predicated upon substantial progress or completion, as applicable, of the Tasks set forth in Exhibit A. Customer rebates and incentives will be paid at average rates of \$0.28/kWh and \$1.50/therm saved				

Contractor shall bill MCE monthly. In no event shall the total cost to MCE for the services provided herein exceed the maximum sum of **\$328,000** for the term of the Agreement.

- Except as otherwise provided herein all terms and conditions of the Agreement shall remain in full force and effect.

IN WITNESS WHEREOF, the parties hereto have executed this First Amendment on the day first written above.

MARIN CLEAN ENERGY:

CONTRACTOR:

By: _____

By: _____

Title: _____

Name: _____

Date: _____

Date: _____

By: _____
Chairperson

Date: _____



June 7, 2019

TO: MCE Executive Committee

FROM: Justin Kudo, Strategic Analysis and Rates Manager &
John Dalessi, Pacific Energy Advisors

RE: Proposed Rates for Fiscal Year 2019/2020 (Agenda Item #06)

ATTACHMENT: Proposed Rates for FY 2019/2020

Dear Executive Committee:

SUMMARY:

The Marin Clean Energy Community Choice Aggregation Implementation Plan and Statement of Intent (“Implementation Plan”) describes the policies and procedures for setting and modifying electric rates for the Marin Clean Energy (MCE) program. As described in the Implementation Plan, the MCE annual ratesetting process is coordinated with the establishment of fiscal year program budgets. MCE rates are typically reviewed on an annual basis once PG&E has made its primary annual rate update to determine whether rate changes are warranted in consideration of the fiscal year’s proposed budget, rate competitiveness, rate stability, customer understanding, efficiency and equity among customers.

Staff worked with the Ad Hoc Ratesetting Committee of the MCE Board to identify a range of rate scenarios for consideration by the Executive Committee. The Executive Committee evaluated the Ad Hoc Ratesetting Committee proposals and voted to recommend that MCE increase rates to an average of 0.3% below proposed PG&E costs.

Various alternative proposals were considered by the Ad Hoc Ratesetting Committee and the Executive Committee in arriving at the recommended rate proposal. The alternative scenarios included maintaining current MCE rates, adjusting MCE rates to achieve customer cost parity with PG&E, and providing a 2% or 3% discount from PG&E costs. The recommended rate proposal, which sets rates at levels intended to allow for a modest customer savings while maintaining financial stability and achieving existing reserve targets, was identified as the best fit for meeting MCE ratesetting policies.

BACKGROUND – MCE RATESETTING CYCLE, POLICIES AND PROCESS

Ratesetting Cycle

MCE typically adjusts its rates on an annual basis, with initial rates proposed to committees in February and taking effect in early April once approved by the full Board. Ratesetting is usually coordinated with the annual budgeting cycle due to the inherent

linkages between the MCE Budget and MCE rates. Rates may also be adjusted more frequently, when necessary, to ensure recovery of all MCE program costs.

This release of the proposed rates initiates a thirty-day public review and comment period. If rate increases are being proposed, the affected MCE customers are provided with notice of said rate increase. Following completion of the thirty-day public review and comment period, final rates are adopted by the Board. Final rates may differ from the initially proposed rates to account for changes in MCE's budget, consideration of public comments received during the aforementioned review period, and/or other factors that may be considered by your Board.

During 2019, PG&E has delayed implementation of its Annual Electric True-Up (AET), their key annual rate change. It is expected that PG&E will implement revised 2019 rates on July 1st, with possible delays to September 1st or beyond. As a result, MCE's ratesetting cycle was initiated at the April 29th Ad Hoc Ratesetting Committee Meeting, with the goal of implementing rate changes by July 1st.

Ratesetting Objectives

MCE has established various objectives that are considered in designing MCE rates. These ratesetting objectives are as follows:

Revenue sufficiency: rates must recover all expenses, debt service and other expenditure requirements, and build prudent reserves; i.e., the "revenue requirement".

Rate competitiveness: rates must allow MCE to successfully compete in the marketplace to retain and attract customers.

Rate stability: rate changes should be minimized to reduce customer bill impacts.

Customer understanding: rates should be simple, transparent and easily understood by customers.

Equity among customers: rate differences among customers should be justified by differences in usage characteristics and/or cost of service.

Efficiency: rates should encourage conservation and efficient use of electricity (e.g., off-peak vehicle charging or time-of-use load shifting).

To the extent that the objectives may be in tension with one another, the rate proposal attempts to strike an appropriate balance. For example, a cost-of-service analysis might suggest that a particular rate should be increased, but the increase might be limited in the interest of rate stability and/or rate competitiveness. In accordance with the Implementation Plan, the policy of revenue sufficiency may not be violated; however, the Board may use discretion in how the other ratesetting objectives are reflected in MCE rates.

Ratesetting Process

The ratesetting cycle begins with a forecast of MCE electric energy sales for the coming fiscal year. The forecast includes the number of customers that are expected to be enrolled and take service on each of the MCE rate schedules as well as the monthly billing quantities expected under each rate schedule. Depending upon the rate schedule

in question, billing quantities can include monthly kWh, kWh during specified time-of-use periods (e.g., on-peak, partial peak, off-peak), maximum monthly kW demand and maximum kW demand during specified time-of-use periods. The forecasted billing quantities are used to derive a forecast of revenues at current (and proposed) MCE rates.

The projected revenue at current rates, termed “present rate revenues”, is compared to fiscal year budget items that must be funded through such rates (the “revenue requirement”) to determine whether rate adjustments are warranted for purposes of addressing any projected surplus or deficit. MCE’s budget for the current fiscal year is based on MCE’s current rates with no changes forecast; the rate changes proposed herein would modify that budget revenue forecast.

For rate design purposes, customers are classified based on end-use and other service characteristics in an attempt to represent groups of customers with relatively similar cost-of-service profiles. MCE has established nine customer classes that include: residential (E-1), small commercial (A-1 and A-6), medium commercial (A-10), large commercial (E-19), industrial (E-20), agricultural (Ag), street lighting (SL) and traffic control (TC) end uses. Revenues are allocated based on a cost of service analysis, assessment of rate competitiveness, and other policy considerations.

Typical end uses within the commercial customer classes are described below:

Rate Group	Example End Use
E-1	Residential
A-1 and A-6	Small office, small retail
A-10	Bank, restaurant, mixed use retail
E-19	Department store, large office building, grocery store
E-20	Institutional, hospital, college, water treatment facility
Ag	Agricultural
SL-1	Street and area lighting
TC-1	Traffic lights

Rates are designed for the various rate schedules associated with each customer class in order to recover the revenue requirement allocated to that class. There are currently 40 rate schedules and sub rates under which MCE customers may take service subject to the relevant eligibility criteria. MCE determines rate schedule eligibility by mapping each MCE rate schedule to an equivalent PG&E rate schedule; as customers select their PG&E rate, they are automatically placed on a corresponding MCE rate schedule.

FY 2019/20 PROPOSED RATES

The Executive Committee recommends designing MCE generation rates for FY 2019/20 to achieve a specified discount to PG&E’s generation rates, net of applicable surcharges. Under this proposal, costs for MCE customers, on average, would increase by 6.6% and would be at least 0.3% below costs that would be incurred under PG&E service. The 0.3% savings is estimated using the highest PCIA vintage available; typical customer savings would be closer to 1% due to the lower PCIA rates associated with the earlier PCIA vintages applicable to most MCE customers. The proposed rates would yield a projected reserve contribution of \$50.3 million during FY 2019/2020, equating to 12.5% of fiscal year revenues.

Revenue Allocation

The rate proposal allocates revenues among customer classes in a manner that brings average rates for all customer classes, inclusive of PG&E surcharges (Power Charge Indifference Adjustment or “PCIA” and the Franchise Fee Surcharge or “FFS”), closer to parity with PG&E. The proposed annualized revenue changes and cost differences relative to PG&E, by customer class are shown in Table 1:

Table 1: Proposed Rate Comparative Analysis Summary (Annualized for Twelve Month Period)

Rate Group	Present MCE Generation + PG&E Charges ¹	Proposed MCE Generation + PG&E Charges ²	Revenue at PG&E Bundled Rates ³	Total Cost Difference	Cost Difference
E-1	482,236,289	523,368,232	524,756,651	(1,388,419)	-0.3%
A-1	141,955,387	146,311,459	146,641,367	(329,907)	-0.2%
A-6	25,577,813	27,004,234	27,071,417	(67,184)	-0.2%
A-10	141,223,222	146,393,495	146,783,739	(390,244)	-0.3%
E-19	138,930,528	142,962,557	143,362,651	(400,093)	-0.3%
E-20	75,375,833	77,591,583	77,834,489	(242,906)	-0.3%
Ag	6,558,750	6,807,426	6,823,835	(16,410)	-0.2%
SL	6,690,786	6,495,046	6,507,495	(12,449)	-0.2%
TC	953,342	990,586	992,715	(2,129)	-0.2%
Total	1,019,501,950	1,077,924,618	1,080,774,359	(2,849,741)	-0.3%

The cost figures in Table 1 represent total delivered electricity costs over a twelve-month period, inclusive of generation charges, distribution and other delivery charges, and, for MCE customers, the PCIA and Franchise Fee surcharges. As can be seen from Table 1, the proposed rate changes are not uniform across the different customer classes served by MCE. The proposed differential rate adjustments were made based on a comparative rate analysis and designed to bring average MCE customer costs for all customer classes below what the costs would be under bundled PG&E rates.

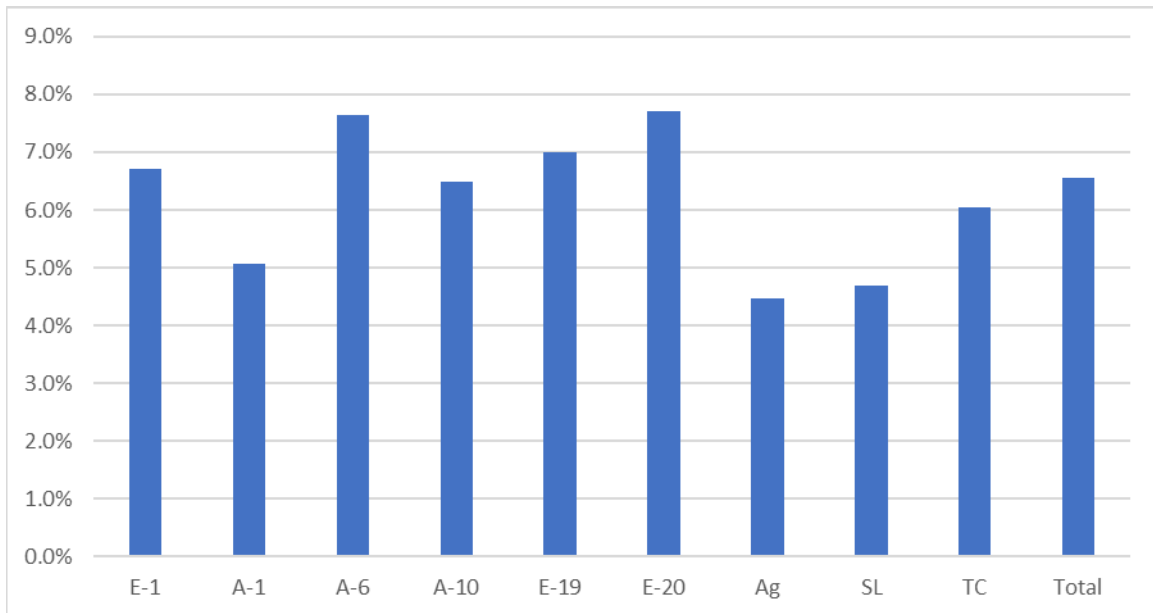
Customer electric bill are expected to increase by an average of 6.6% due to a combination of MCE rate changes and changes to PG&E’s PCIA rates. Figure 1 illustrates the estimated customer bill impacts for typical customers across customer classes.

¹ Includes current MCE charges and PG&E delivery and PCIA/Franchise Fee Surcharges for 2019 vintage. PG&E rates are expected as of July 1st, 2019, per AL 5527-E.

² Includes MCE charges and PG&E delivery and PCIA/Franchise Fee surcharges for 2019 vintage. PG&E rates are expected as of July 1st, 2019, per AL 5527-E.

³ Includes PG&E generation and delivery charges.

Figure 1: Average Monthly Bill Impacts



Rate Design

The individual rate components on each rate schedule were examined in relation to the costs of providing electric service as well as how they compare to the corresponding PG&E rate, after taking PCIA surcharges into consideration. Generally speaking, each rate component reflects a similar percentage discount relative to the PG&E rate structure. As a result of CPUC approved changes to the PCIA methodology, the residential PCIA is decreasing while other PCIA rates are increasing. To maintain steady rates and a similar overall rate change to all customer classes, residential rates are increasing more than other classes. However, the overall on-bill change would be consistent with other customer classes. A comparison of current and proposed rates is included in Attachment A.

EV2 Rates

PG&E has submitted filings to implement an EV (Electric Vehicle) rate successor tariff, EV2, which if approved would replace EV for most customers in October. The Executive Committee has recommended that your Board direct staff to implement an EV2 rate as PG&E's final EV2 rate becomes available, following the same savings of approximately 0.3% of total bill for MCE customers.

EV2 is structured similarly to EV but follows the new peak period of 4 p.m. to 9 p.m. (rather than the current peak of 2 p.m. to 9 p.m.). Rate pricing will be updated by PG&E to match marginal costs associated with the new hours. Residential solar customers – benefitting from the additional peak hours of 2 p.m. to 4 p.m. and associated rates – will be able to keep the current EV rate structure for up to five years.

Customers with very annual high usage – just under 500% of the typical household usage – will be ineligible to continue on the EV2 rate schedule. PG&E has indicated that this is intended to prevent current utilization of the rate for non-EV purposes, particularly residential marijuana cultivation. Affected customers will receive a notification of

potential disqualification from the EV2 rate before being moved to a different residential rate (E-TOU-B).

Standby Rates

Standby is a rare rate schedule used to serve customers under certain conditions, often customers supplied by electricity from self-generation or non-utility sources. MCE does not currently have an established Standby rate. The Executive Committee has recommended that your Board direct staff to implement a Standby rate as part of the current ratesetting process following the same savings of approximately 0.3% of total bill for MCE customers. The MCE Standby rate would apply to a very small number of existing customers.

New Commercial Rates

Across California, most utilities are restructuring the time-of-use periods applied in rate setting. As part of this effort PG&E will be introducing new optional commercial rate schedules similar to existing commercial rate structures, but with their peak period shifted from the current 12 p.m. to 6 p.m. period to a 4 p.m. to 9 p.m. period. Corresponding partial-peak and off-peak periods will be adjusted, peak seasons will be shortened, and a new “super off peak” rate will be introduced during the Spring. The Executive Committee has recommended that your Board direct staff to implement a similar rate structure for MCE as soon as possible once PG&E’s rates become available. The rate structure would follow the same savings of approximately 0.3% of total bill for MCE customers.

The goal of these new rates is to incentivize shifting of load away from periods of peak grid strain and to better match rates with the cost of serving load. The current peak period of 12 p.m. to 6 p.m. is no longer consistent with the current shape and pricing of power on California’s power grid. Current energy prices tend to decrease in the middle of the day and increase in the evening as solar goes offline, causing a phenomenon commonly referred to as the “duck curve”.

While these rates are expected to be available from PG&E in October of 2019, they will be optional for the first year. In October 2020 they are expected to become mandatory for most customer classes – with exceptions for certain solar-friendly rates.

Customer Outreach

MCE customer outreach efforts were initiated following the Executive Committee decision to move forward with the proposed rate adjustments. Customer notifications were initiated through on-bill messages starting with the May 7th billing cycle, via our website and through rate documents available at MCE’s front desks. MCE’s contact center was also provided with detailed information on the rate change, with direction to track and escalate inquiries where appropriate.

MCE’s Notice of Proposed Rate Adjustment was also run as a newspaper advertisement in each of MCE’s four counties, with ads running on May 15th and June 5th. The notices are 1/6th of a page and provide general information on the rate increase, as well as where and how comments can be submitted. These notices were printed in the East Bay Times, the Marin Independent Journal, the Napa Valley Register, and the Benicia Herald.

Staff initiated direct outreach to MCE's largest customers to notify them of the rate changes and answer any concerns they might have about MCE or PG&E's upcoming rate changes. Additionally, staff provided a summary of the rate change to municipal agencies through its May update.

Termination Fees

MCE's rates and charges include a Termination Fee applicable to customers departing MCE service after the initial sixty-day post enrollment opt-out period. The Termination Fee is proposed to remain unchanged for FY 2019/20. The Administrative Fee component of the Termination Fee would remain at \$5 for residential customers and \$25 for non-residential customers. The Cost Recovery Charge component of the Termination Fee, which would apply in the event MCE is unable to recover the costs of supply commitments attributable to the customer that is terminating service, would remain at zero.

Recommendation: Information only.

MARIN CLEAN ENERGY

PROPOSED RATES AS OF JULY 1, 2019

PG&E EQUIVALENT SCHEDULE	MCE RATE SCHEDULE	UNIT/PERIOD	CURRENT MCE GENERATION RATE	CURRENT PG&E FEES (PCIA & FF)	CURRENT EFFECTIVE GENERATION RATE	PROPOSED MCE GENERATION RATE	PROPOSED PG&E FEES (PCIA & FF)	PROPOSED EFFECTIVE GENERATION RATE	PROPOSED PG&E GENERATION RATE	MCE GENERATION & PG&E FEES VS. PG&E GENERATION (negative % indicates savings with MCE)
RESIDENTIAL CUSTOMERS										
E-1, EL-1, EM, EML, ES, ESL, ESR, ESRL, ET, ETL	E-1									
	ENERGY CHARGE (\$/KWH)	All Energy	0.06800	0.03443	0.10243	0.08500	0.03058	0.11558	0.11639	-0.70%
E-6, EL-6	E-6									
	ENERGY CHARGE (\$/KWH)									
		Summer Peak	0.18600	0.03443	0.22043	0.22700	0.03058	0.25758	0.25912	-0.59%
		Summer Part Peak	0.08200	0.03443	0.11643	0.10500	0.03058	0.13558	0.13612	-0.40%
		Summer Off-Peak	0.04300	0.03443	0.07743	0.05500	0.03058	0.08558	0.08591	-0.38%
		Winter Partial Peak	0.06500	0.03443	0.09943	0.08300	0.03058	0.11358	0.11379	-0.18%
		Winter Off-Peak	0.05200	0.03443	0.08643	0.06900	0.03058	0.09958	0.09998	-0.40%
EV-A, EV-B	EV									
	ENERGY CHARGE (\$/KWH)									
		Summer Peak	0.21200	0.03443	0.24643	0.24400	0.03058	0.27458	0.27567	-0.40%
		Summer Part Peak	0.07000	0.03443	0.10443	0.10200	0.03058	0.13258	0.13285	-0.20%
		Summer Off-Peak	0.02200	0.03443	0.05643	0.03600	0.03058	0.06658	0.06676	-0.27%
		Winter Peak	0.05700	0.03443	0.09143	0.07200	0.03058	0.10258	0.10301	-0.42%
		Winter Partial Peak	0.02300	0.03443	0.05743	0.03300	0.03058	0.06358	0.06436	-1.21%
		Winter Off-Peak	0.02300	0.03443	0.05743	0.03800	0.03058	0.06858	0.06915	-0.82%
E-TOU-A, EL-TOU-A	E-TOU-A									
	ENERGY CHARGE (\$/KWH)									
		Summer Peak	0.15300	0.03443	0.18743	0.16800	0.03058	0.19858	0.19995	-0.69%
		Summer Off-Peak	0.07800	0.03443	0.11243	0.09300	0.03058	0.12358	0.12438	-0.64%
		Winter Peak	0.06600	0.03443	0.10043	0.08100	0.03058	0.11158	0.11261	-0.91%
		Winter Off-Peak	0.05200	0.03443	0.08643	0.06700	0.03058	0.09758	0.09832	-0.75%
E-TOU-B, EL-TOU-B	E-TOU-B									
	ENERGY CHARGE (\$/KWH)									
		Summer Peak	0.17800	0.03443	0.21243	0.19000	0.03058	0.22058	0.22185	-0.57%
		Summer Off-Peak	0.07200	0.03443	0.10643	0.08800	0.03058	0.11858	0.11879	-0.18%
		Winter Peak	0.06900	0.03443	0.10343	0.08400	0.03058	0.11458	0.11501	-0.37%
		Winter Off-Peak	0.04900	0.03443	0.08343	0.06500	0.03058	0.09558	0.09621	-0.65%
E-TOU-C3	E-TOU-C3									
	ENERGY CHARGE (\$/KWH)									
		Summer Peak	0.12700	0.03443	0.16143	0.14300	0.03058	0.17358	0.17493	-0.77%
		Summer Off-Peak	0.06300	0.03443	0.09743	0.08000	0.03058	0.11058	0.11149	-0.82%
		Winter Peak	0.07000	0.03443	0.10443	0.08700	0.03058	0.11758	0.11847	-0.75%
		Winter Off-Peak	0.05300	0.03443	0.08743	0.07000	0.03058	0.10058	0.10114	-0.55%

MARIN CLEAN ENERGY

PROPOSED RATES AS OF JULY 1, 2019

PG&E EQUIVALENT SCHEDULE	MCE RATE SCHEDULE	UNIT/PERIOD	CURRENT MCE GENERATION RATE	CURRENT PG&E FEES (PCIA & FF)	CURRENT EFFECTIVE GENERATION RATE	PROPOSED MCE GENERATION RATE	PROPOSED PG&E FEES (PCIA & FF)	PROPOSED EFFECTIVE GENERATION RATE	PROPOSED PG&E GENERATION RATE	MCE GENERATION & PG&E FEES VS. PG&E GENERATION (negative % indicates savings with MCE)
<u>COMMERCIAL, INDUSTRIAL AND GENERAL SERVICE CUSTOMERS</u>										
A-1-A	A-1-A									
	ENERGY CHARGE (\$/KWH)									
		SUMMER	0.09200	0.02559	0.11759	0.10200	0.02993	0.13193	0.13258	-0.49%
		WINTER	0.05700	0.02559	0.08259	0.06100	0.02993	0.09093	0.09121	-0.31%
A-1-B	A-1-B									
	ENERGY CHARGE (\$/KWH)									
		<u>SUMMER</u>								
		PEAK	0.10800	0.02559	0.13359	0.11600	0.02993	0.14593	0.14664	-0.48%
		PART-PEAK	0.08600	0.02559	0.11159	0.09200	0.02993	0.12193	0.12298	-0.85%
		OFF-PEAK	0.05700	0.02559	0.08259	0.06500	0.02993	0.09493	0.09563	-0.73%
		<u>WINTER</u>								
		PART-PEAK	0.08400	0.02559	0.10959	0.09200	0.02993	0.12193	0.12279	-0.70%
		OFF-PEAK	0.06300	0.02559	0.08859	0.07100	0.02993	0.10093	0.10188	-0.93%
A-6	A-6									
	ENERGY CHARGE (\$/KWH)									
		<u>SUMMER</u>								
		PEAK	0.34000	0.02559	0.36559	0.35500	0.02993	0.38493	0.38637	-0.37%
		PART-PEAK	0.10200	0.02559	0.12759	0.11600	0.02993	0.14593	0.14679	-0.59%
		OFF-PEAK	0.04500	0.02559	0.07059	0.05800	0.02993	0.08793	0.08849	-0.63%
		<u>WINTER</u>								
		PART-PEAK	0.07100	0.02559	0.09659	0.08300	0.02993	0.11293	0.11396	-0.90%
		OFF-PEAK	0.05200	0.02559	0.07759	0.06600	0.02993	0.09593	0.09646	-0.55%

MARIN CLEAN ENERGY

PROPOSED RATES AS OF JULY 1, 2019

PG&E EQUIVALENT SCHEDULE	MCE RATE SCHEDULE	UNIT/PERIOD	CURRENT MCE GENERATION RATE	CURRENT PG&E FEES (PCIA & FF)	CURRENT EFFECTIVE GENERATION RATE	PROPOSED MCE GENERATION RATE	PROPOSED PG&E FEES (PCIA & FF)	PROPOSED EFFECTIVE GENERATION RATE	PROPOSED PG&E GENERATION RATE	MCE GENERATION & PG&E FEES VS. PG&E GENERATION (negative % indicates savings with MCE)
A-10-A	A-10-A									
	ENERGY CHARGE (\$/KWH)									
		SUMMER	0.08100	0.02599	0.10699	0.09000	0.03130	0.12130	0.12184	-0.44%
		WINTER	0.05800	0.02599	0.08399	0.06200	0.03130	0.09330	0.09354	-0.26%
	DEMAND CHARGE (\$/KW)									
		SUMMER MAX	4.85000			5.65000			5.68000	-0.53%
	A-10-A-P									
	ENERGY CHARGE (\$/KWH)									
		SUMMER	0.07776	0.02599	0.10375	0.08000	0.03130	0.11130	0.11184	-0.48%
		WINTER	0.05568	0.02599	0.08167	0.05500	0.03130	0.08630	0.08722	-1.05%
	DEMAND CHARGE (\$/KW)									
		SUMMER MAX	4.65600			4.93000			4.93000	0.00%
A-10-B	A-10-B									
	ENERGY CHARGE (\$/KWH)									
		<u>SUMMER</u>								
		PEAK	0.13500	0.02599	0.16099	0.14300	0.03130	0.17430	0.17512	-0.47%
		PART-PEAK	0.08200	0.02599	0.10799	0.08800	0.03130	0.11930	0.11999	-0.58%
		OFF-PEAK	0.05400	0.02599	0.07999	0.06000	0.03130	0.09130	0.09192	-0.67%
		<u>WINTER</u>								
		PART-PEAK	0.06500	0.02599	0.09099	0.07200	0.03130	0.10330	0.10405	-0.72%
		OFF-PEAK	0.04900	0.02599	0.07499	0.05500	0.03130	0.08630	0.08698	-0.78%
	DEMAND CHARGE (\$/KW)									
		SUMMER MAX	4.85000			5.65000		5.68000	5.68000	-0.53%
	A-10-B-P									
	ENERGY CHARGE (\$/KWH)									
		<u>SUMMER</u>								
		PEAK	0.12960	0.02599	0.15559	0.13100	0.03130	0.16230	0.16285	-0.34%
		PART-PEAK	0.07872	0.02599	0.10471	0.08000	0.03130	0.11130	0.11228	-0.87%
		OFF-PEAK	0.05184	0.02599	0.07783	0.05400	0.03130	0.08530	0.08566	-0.42%
		<u>WINTER</u>								
		PART-PEAK	0.06240	0.02599	0.08839	0.06700	0.03130	0.09830	0.09859	-0.29%
		OFF-PEAK	0.04704	0.02599	0.07303	0.05100	0.03130	0.08230	0.08271	-0.50%
	DEMAND CHARGE (\$/KW)									
		SUMMER MAX	4.65600			4.93000			4.95000	-0.40%

MARIN CLEAN ENERGY

PROPOSED RATES AS OF JULY 1, 2019

PG&E EQUIVALENT SCHEDULE	MCE RATE SCHEDULE	UNIT/PERIOD	CURRENT MCE GENERATION RATE	CURRENT PG&E FEES (PCIA & FF)	CURRENT EFFECTIVE GENERATION RATE	PROPOSED MCE GENERATION RATE	PROPOSED PG&E FEES (PCIA & FF)	PROPOSED EFFECTIVE GENERATION RATE	PROPOSED PG&E GENERATION RATE	MCE GENERATION & PG&E FEES VS. PG&E GENERATION (negative % indicates savings with MCE)
E-19-S, V	E-19-S									
	ENERGY CHARGE (\$/KWH)									
		<u>SUMMER</u>								
		PEAK	0.10500	0.02192	0.12692	0.11700	0.02880	0.14580	0.14610	-0.21%
		PART-PEAK	0.06500	0.02192	0.08692	0.07000	0.02880	0.09880	0.09896	-0.16%
		OFF-PEAK	0.04000	0.02192	0.06192	0.03900	0.02880	0.06780	0.06773	0.10%
		<u>WINTER</u>								
		PART-PEAK	0.05900	0.02192	0.08092	0.06300	0.02880	0.09180	0.09250	-0.76%
		OFF-PEAK	0.04500	0.02192	0.06692	0.04600	0.02880	0.07480	0.07548	-0.90%
	DEMAND CHARGE (\$/KW)									
		<u>SUMMER</u>								
		PEAK	12.60000			14.64000			14.71000	-0.48%
		PART-PEAK	3.10000			3.61000			3.63000	-0.55%
E-19-P, V	E-19-P									
	ENERGY CHARGE (\$/KWH)									
		<u>SUMMER</u>								
		PEAK	0.09700	0.02192	0.11892	0.10500	0.02880	0.13380	0.13493	-0.84%
		PART-PEAK	0.05800	0.02192	0.07992	0.06100	0.02880	0.08980	0.09043	-0.70%
		OFF-PEAK	0.03500	0.02192	0.05692	0.03300	0.02880	0.06180	0.06183	-0.05%
		<u>WINTER</u>								
		PART-PEAK	0.05300	0.02192	0.07492	0.05500	0.02880	0.08380	0.08442	-0.73%
		OFF-PEAK	0.04000	0.02192	0.06192	0.04000	0.02880	0.06880	0.06890	-0.15%
	DEMAND CHARGE (\$/KW)									
		<u>SUMMER</u>								
		PEAK	11.25000			13.02000			13.09000	-0.53%
		PART-PEAK	2.75000			3.17000			3.19000	-0.63%
E-19-T, V	E-19-T									
	ENERGY CHARGE (\$/KWH)									
		<u>SUMMER</u>								
		PEAK	0.06000	0.02192	0.08192	0.06400	0.02880	0.09280	0.09306	-0.28%
		PART-PEAK	0.04800	0.02192	0.06992	0.04900	0.02880	0.07780	0.07846	-0.84%
		OFF-PEAK	0.03400	0.02192	0.05592	0.03000	0.02880	0.05880	0.05914	-0.57%
		<u>WINTER</u>								
		PART-PEAK	0.05000	0.02192	0.07192	0.05200	0.02880	0.08080	0.08076	0.05%
		OFF-PEAK	0.03800	0.02192	0.05992	0.03700	0.02880	0.06580	0.06592	-0.18%
	DEMAND CHARGE (\$/KW)									
		<u>SUMMER</u>								
		PEAK	12.40000			14.32000			14.39000	-0.49%
		PART-PEAK	3.10000			3.59000			3.61000	-0.55%

MARIN CLEAN ENERGY

PROPOSED RATES AS OF JULY 1, 2019

PG&E EQUIVALENT SCHEDULE	MCE RATE SCHEDULE	UNIT/PERIOD	CURRENT MCE GENERATION RATE	CURRENT PG&E FEES (PCIA & FF)	CURRENT EFFECTIVE GENERATION RATE	PROPOSED MCE GENERATION RATE	PROPOSED PG&E FEES (PCIA & FF)	PROPOSED EFFECTIVE GENERATION RATE	PROPOSED PG&E GENERATION RATE	MCE GENERATION & PG&E FEES VS. PG&E GENERATION (negative % indicates savings with MCE)
E-19-R-S, V-R-S	E-19-R-S									
	ENERGY CHARGE (\$/KWH)									
	<u>SUMMER</u>									
	PEAK		0.24000	0.02192	0.26192	0.30600	0.02880	0.33480	0.33654	-0.52%
	PART-PEAK		0.09500	0.02192	0.11692	0.10700	0.02880	0.13580	0.13646	-0.48%
	OFF-PEAK		0.03900	0.02192	0.06092	0.03900	0.02880	0.06780	0.06773	0.10%
	<u>WINTER</u>									
	PART-PEAK		0.06000	0.02192	0.08192	0.06300	0.02880	0.09180	0.09250	-0.76%
	OFF-PEAK		0.04500	0.02192	0.06692	0.04600	0.02880	0.07480	0.07548	-0.90%
E-19-R-P, V-R-P	E-19-R-P									
	ENERGY CHARGE (\$/KWH)									
	<u>SUMMER</u>									
	PEAK		0.23000	0.02192	0.25192	0.29600	0.02880	0.32480	0.32673	-0.59%
	PART-PEAK		0.08800	0.02192	0.10992	0.09800	0.02880	0.12680	0.12728	-0.38%
	OFF-PEAK		0.03400	0.02192	0.05592	0.03300	0.02880	0.06180	0.06183	-0.05%
	<u>WINTER</u>									
	PART-PEAK		0.05300	0.02192	0.07492	0.05500	0.02880	0.08380	0.08442	-0.73%
	OFF-PEAK		0.04000	0.02192	0.06192	0.04000	0.02880	0.06880	0.0689	-0.15%
E-19-R-T, V-R-T	E-19-R-T									
	ENERGY CHARGE (\$/KWH)									
	<u>SUMMER</u>									
	PEAK		0.23000	0.02192	0.25192	0.31000	0.02880	0.33880	0.34024	-0.42%
	PART-PEAK		0.08500	0.02192	0.10692	0.10200	0.02880	0.13080	0.13194	-0.86%
	OFF-PEAK		0.03200	0.02192	0.05392	0.03000	0.02880	0.05880	0.05914	-0.57%
	<u>WINTER</u>									
	PART-PEAK		0.05000	0.02192	0.07192	0.05200	0.02880	0.08080	0.08076	0.05%
	OFF-PEAK		0.03800	0.02192	0.05992	0.03700	0.02880	0.06580	0.06592	-0.18%

MARIN CLEAN ENERGY

PROPOSED RATES AS OF JULY 1, 2019

PG&E EQUIVALENT SCHEDULE	MCE RATE SCHEDULE	UNIT/PERIOD	CURRENT MCE GENERATION RATE	CURRENT PG&E FEES (PCIA & FF)	CURRENT EFFECTIVE GENERATION RATE	PROPOSED MCE GENERATION RATE	PROPOSED PG&E FEES (PCIA & FF)	PROPOSED EFFECTIVE GENERATION RATE	PROPOSED PG&E GENERATION RATE	MCE GENERATION & PG&E FEES VS. PG&E GENERATION (negative % indicates savings with MCE)
E-20-S	E-20-S									
	ENERGY CHARGE (\$/KWH)									
		<u>SUMMER</u>								
		PEAK	0.09500	0.02107	0.11607	0.10800	0.02744	0.13544	0.13597	-0.39%
		PART-PEAK	0.06000	0.02107	0.08107	0.06500	0.02744	0.09244	0.09304	-0.64%
		OFF-PEAK	0.03600	0.02107	0.05707	0.03600	0.02744	0.06344	0.06356	-0.19%
		<u>WINTER</u>								
		PART-PEAK	0.05500	0.02107	0.07607	0.05900	0.02744	0.08644	0.08680	-0.41%
		OFF-PEAK	0.04100	0.02107	0.06207	0.04300	0.02744	0.07044	0.07083	-0.55%
	DEMAND CHARGE (\$/KW)									
		<u>SUMMER</u>								
		PEAK	12.20000			14.20000			14.27000	-0.49%
		PART-PEAK	3.00000			3.50000			3.52000	-0.57%
E-20-P	E-20-P									
	ENERGY CHARGE (\$/KWH)									
		<u>SUMMER</u>								
		PEAK	0.10200	0.01967	0.12167	0.11200	0.02616	0.13816	0.13876	-0.43%
		PART-PEAK	0.06100	0.01967	0.08067	0.06500	0.02616	0.09116	0.09153	-0.40%
		OFF-PEAK	0.03700	0.01967	0.05667	0.03600	0.02616	0.06216	0.06247	-0.50%
		<u>WINTER</u>								
		PART-PEAK	0.05600	0.01967	0.07567	0.05900	0.02616	0.08516	0.08530	-0.16%
		OFF-PEAK	0.04200	0.01967	0.06167	0.04300	0.02616	0.06916	0.06961	-0.65%
	DEMAND CHARGE (\$/KW)									
		<u>SUMMER</u>								
		PEAK	13.40000			15.55000			15.63000	-0.51%
		PART-PEAK	3.15000			3.68000			3.70000	-0.54%
E-20-T	E-20-T									
	ENERGY CHARGE (\$/KWH)									
		<u>SUMMER</u>								
		PEAK	0.06200	0.01808	0.08008	0.06600	0.02447	0.09047	0.09137	-0.99%
		PART-PEAK	0.04900	0.01808	0.06708	0.05200	0.02447	0.07647	0.07704	-0.74%
		OFF-PEAK	0.03400	0.01808	0.05208	0.03300	0.02447	0.05747	0.05807	-1.03%
		<u>WINTER</u>								
		PART-PEAK	0.05100	0.01808	0.06908	0.05400	0.02447	0.07847	0.07929	-1.03%
		OFF-PEAK	0.03900	0.01808	0.05708	0.04000	0.02447	0.06447	0.06472	-0.39%
	DEMAND CHARGE (\$/KW)									
		<u>SUMMER</u>								
		PEAK	15.85000			18.53000			18.62000	-0.48%
		PART-PEAK	3.75000			4.42000			4.44000	-0.45%

MARIN CLEAN ENERGY

PROPOSED RATES AS OF JULY 1, 2019

PG&E EQUIVALENT SCHEDULE	MCE RATE SCHEDULE	UNIT/PERIOD	CURRENT MCE GENERATION RATE	CURRENT PG&E FEES (PCIA & FF)	CURRENT EFFECTIVE GENERATION RATE	PROPOSED MCE GENERATION RATE	PROPOSED PG&E FEES (PCIA & FF)	PROPOSED EFFECTIVE GENERATION RATE	PROPOSED PG&E GENERATION RATE	MCE GENERATION & PG&E FEES VS. PG&E GENERATION (negative % indicates savings with MCE)
E-20-R-S	E-20-R-S									
	ENERGY CHARGE (\$/KWH)									
		<u>SUMMER</u>								
		PEAK	0.22000	0.02107	0.24107	0.27200	0.02744	0.29944	0.30078	-0.45%
		PART-PEAK	0.09000	0.02107	0.11107	0.10100	0.02744	0.12844	0.12873	-0.23%
		OFF-PEAK	0.03700	0.02107	0.05807	0.03600	0.02744	0.06344	0.06356	-0.19%
		<u>WINTER</u>								
		PART-PEAK	0.05500	0.02107	0.07607	0.05900	0.02744	0.08644	0.08680	-0.41%
		OFF-PEAK	0.04200	0.02107	0.06307	0.04300	0.02744	0.07044	0.07083	-0.55%
E-20-R-P	E-20-R-P									
	ENERGY CHARGE (\$/KWH)									
		<u>SUMMER</u>								
		PEAK	0.24000	0.01967	0.25967	0.29200	0.02616	0.31816	0.31955	-0.43%
		PART-PEAK	0.08900	0.01967	0.10867	0.10000	0.02616	0.12616	0.12684	-0.54%
		OFF-PEAK	0.03700	0.01967	0.05667	0.03600	0.02616	0.06216	0.06247	-0.50%
		<u>WINTER</u>								
		PART-PEAK	0.05500	0.01967	0.07467	0.05900	0.02616	0.08516	0.08530	-0.16%
		OFF-PEAK	0.04200	0.01967	0.06167	0.04300	0.02616	0.06916	0.06961	-0.65%
E-20-R-T	E-20-R-T									
	ENERGY CHARGE (\$/KWH)									
		<u>SUMMER</u>								
		PEAK	0.23000	0.01808	0.24808	0.27700	0.02447	0.30147	0.30301	-0.51%
		PART-PEAK	0.08400	0.01808	0.10208	0.09500	0.02447	0.11947	0.12026	-0.66%
		OFF-PEAK	0.03500	0.01808	0.05308	0.03300	0.02447	0.05747	0.05807	-1.03%
		<u>WINTER</u>								
		PART-PEAK	0.05100	0.01808	0.06908	0.05400	0.02447	0.07847	0.07929	-1.03%
		OFF-PEAK	0.04000	0.01808	0.05808	0.04000	0.02447	0.06447	0.06472	-0.39%

MARIN CLEAN ENERGY

PROPOSED RATES AS OF JULY 1, 2019

PG&E EQUIVALENT SCHEDULE	MCE RATE SCHEDULE	UNIT/PERIOD	CURRENT MCE GENERATION RATE	CURRENT PG&E FEES (PCIA & FF)	CURRENT EFFECTIVE GENERATION RATE	PROPOSED MCE GENERATION RATE	PROPOSED PG&E FEES (PCIA & FF)	PROPOSED EFFECTIVE GENERATION RATE	PROPOSED PG&E GENERATION RATE	MCE GENERATION & PG&E FEES VS. PG&E GENERATION (negative % indicates savings with MCE)
STOUS	STOUS									
	ENERGY CHARGE (\$/KWH)									
		<u>SUMMER</u>								
		PEAK	NA	0.01261	0.01261	0.09600	0.02234	0.11834	0.11892	-0.49%
		PART-PEAK	NA	0.01261	0.01261	0.07700	0.02234	0.09934	0.10005	-0.71%
		OFF-PEAK	NA	0.01261	0.01261	0.05300	0.02234	0.07534	0.07536	-0.03%
		<u>WINTER</u>								
		PART-PEAK	NA	0.01261	0.01261	0.08000	0.02234	0.10234	0.10306	-0.70%
		OFF-PEAK	NA	0.01261	0.01261	0.06100	0.02234	0.08334	0.08393	-0.70%
	RESERVATION CHARGE (\$/KW)		NA			0.46000			0.46000	0.00%
STOUP	STOUP									
	ENERGY CHARGE (\$/KWH)									
		<u>SUMMER</u>								
		PEAK	NA	0.01261	0.01261	0.09600	0.02234	0.11834	0.11892	-0.49%
		PART-PEAK	NA	0.01261	0.01261	0.07700	0.02234	0.09934	0.10005	-0.71%
		OFF-PEAK	NA	0.01261	0.01261	0.05300	0.02234	0.07534	0.07536	-0.03%
		<u>WINTER</u>								
		PART-PEAK	NA	0.01261	0.01261	0.08000	0.02234	0.10234	0.10306	-0.70%
		OFF-PEAK	NA	0.01261	0.01261	0.06100	0.02234	0.08334	0.08393	-0.70%
	RESERVATION CHARGE (\$/KW)		NA			0.46000			0.46000	0.00%
STOUT	STOUT									
	ENERGY CHARGE (\$/KWH)									
		<u>SUMMER</u>								
		PEAK	NA	0.01261	0.01261	0.07600	0.02234	0.09834	0.09907	-0.74%
		PART-PEAK	NA	0.01261	0.01261	0.06100	0.02234	0.08334	0.08352	-0.22%
		OFF-PEAK	NA	0.01261	0.01261	0.04000	0.02234	0.06234	0.06296	-0.98%
		<u>WINTER</u>								
		PART-PEAK	NA	0.01261	0.01261	0.06300	0.02234	0.08534	0.08597	-0.73%
		OFF-PEAK	NA	0.01261	0.01261	0.04700	0.02234	0.06934	0.07017	-1.18%
	RESERVATION CHARGE (\$/KW)		NA			0.38000			0.38000	0.00%
<u>AGRICULTURAL CUSTOMERS</u>										
AG-1-A	AG-1-A									
	ENERGY CHARGE (\$/KWH)									
		SUMMER	0.07700	0.02546	0.10246	0.08500	0.02652	0.11152	0.11235	-0.74%
		WINTER	0.05800	0.02546	0.08346	0.06300	0.02652	0.08952	0.09011	-0.65%
	CONNECTED LOAD (\$/HP)									
		SUMMER MAX	1.35000			1.53000			1.54000	-0.65%
		WINTER MAX	-			-				
AG-1-B	AG-1-B									
	ENERGY CHARGE (\$/KWH)									
		SUMMER	0.08000	0.02546	0.10546	0.08900	0.02652	0.11552	0.11606	-0.47%
		WINTER	0.05700	0.02546	0.08246	0.06300	0.02652	0.08952	0.09047	-1.05%
	DEMAND CHARGE (\$/KW)									
		SUMMER MAX	2.00000			2.31000			2.31000	0.00%
		WINTER MAX	-			-				
AG-RA	AG-RA									
	ENERGY CHARGE (\$/KWH)									
		<u>SUMMER</u>								
		PEAK	0.24200	0.02546	0.26746	0.28200	0.02652	0.30852	0.30989	-0.44%
		OFF-PEAK	0.04500	0.02546	0.07046	0.05100	0.02652	0.07752	0.07805	-0.68%

MARIN CLEAN ENERGY

PROPOSED RATES AS OF JULY 1, 2019

PG&E EQUIVALENT SCHEDULE	MCE RATE SCHEDULE	UNIT/PERIOD	CURRENT MCE GENERATION RATE	CURRENT PG&E FEES (PCIA & FF)	CURRENT EFFECTIVE GENERATION RATE	PROPOSED MCE GENERATION RATE	PROPOSED PG&E FEES (PCIA & FF)	PROPOSED EFFECTIVE GENERATION RATE	PROPOSED PG&E GENERATION RATE	MCE GENERATION & PG&E FEES VS. PG&E GENERATION (negative % indicates savings with MCE)
		<u>WINTER</u>								
		PART-PEAK	0.05200	0.02546	0.07746	0.05900	0.02652	0.08552	0.0863	-0.90%
		OFF-PEAK	0.04200	0.02546	0.06746	0.04700	0.02652	0.07352	0.07347	0.07%
	CONNECTED LOAD (\$/HP)									
		SUMMER	1.3000			1.5100			1.52	-0.66%
		WINTER	-			-				
AG-RB	AG-RB									
	ENERGY CHARGE (\$/KWH)									
		<u>SUMMER</u>								
		PEAK	0.21500	0.02546	0.24046	0.25300	0.02652	0.27952	0.28078	-0.45%
		OFF-PEAK	0.04500	0.02546	0.07046	0.05100	0.02652	0.07752	0.07773	-0.27%
		<u>WINTER</u>								
		PART-PEAK	0.04100	0.02546	0.06646	0.04400	0.02652	0.07052	0.0713	-1.09%
		OFF-PEAK	0.03500	0.02546	0.06046	0.03400	0.02652	0.06052	0.06073	-0.35%
	DEMAND CHARGE (\$/KW)									
		<u>SUMMER</u>								
		MAX	1.9000			2.2500			2.26	-0.44%
		PEAK	2.1500			2.5300			2.52	0.40%
		WINTER	-			-				

MARIN CLEAN ENERGY

PROPOSED RATES AS OF JULY 1, 2019

PG&E EQUIVALENT SCHEDULE	MCE RATE SCHEDULE	UNIT/PERIOD	CURRENT MCE GENERATION RATE	CURRENT PG&E FEES (PCIA & FF)	CURRENT EFFECTIVE GENERATION RATE	PROPOSED MCE GENERATION RATE	PROPOSED PG&E FEES (PCIA & FF)	PROPOSED EFFECTIVE GENERATION RATE	PROPOSED PG&E GENERATION RATE	MCE GENERATION & PG&E FEES VS. PG&E GENERATION (negative % indicates savings with MCE)
AG-VA	AG-VA									
	ENERGY CHARGE (\$/KWH)									
		<u>SUMMER</u>								
		PEAK	0.21000	0.02546	0.23546	0.24300	0.02652	0.26952	0.27113	-0.59%
		OFF-PEAK	0.04300	0.02546	0.06846	0.04800	0.02652	0.07452	0.07489	-0.49%
		<u>WINTER</u>								
		PART-PEAK	0.05100	0.02546	0.07646	0.05800	0.02652	0.08452	0.08454	-0.02%
		OFF-PEAK	0.04000	0.02546	0.06546	0.04500	0.02652	0.07152	0.07196	-0.61%
	CONNECTED LOAD (\$/HP)									
		SUMMER	1.3500			1.5800			1.59	-0.63%
		WINTER	-			-				
AG-VB	AG-VB									
	ENERGY CHARGE (\$/KWH)									
		<u>SUMMER</u>								
		PEAK	0.18500	0.02546	0.21046	0.22600	0.02652	0.25252	0.25382	-0.51%
		OFF-PEAK	0.04400	0.02546	0.06946	0.04900	0.02652	0.07552	0.0764	-1.15%
		<u>WINTER</u>								
		PART-PEAK	0.03900	0.02546	0.06446	0.04500	0.02652	0.07152	0.07231	-1.09%
		OFF-PEAK	0.03500	0.02546	0.06046	0.03500	0.02652	0.06152	0.06157	-0.08%
	DEMAND CHARGE (\$/KW)									
		<u>SUMMER</u>								
		MAX	1.7500			2.0800			2.09	-0.48%
		PEAK	2.2500			2.6800			2.69	-0.37%
		WINTER	-			-				

MARIN CLEAN ENERGY

PROPOSED RATES AS OF JULY 1, 2019

PG&E EQUIVALENT SCHEDULE	MCE RATE SCHEDULE	UNIT/PERIOD	CURRENT MCE GENERATION RATE	CURRENT PG&E FEES (PCIA & FF)	CURRENT EFFECTIVE GENERATION RATE	PROPOSED MCE GENERATION RATE	PROPOSED PG&E FEES (PCIA & FF)	PROPOSED EFFECTIVE GENERATION RATE	PROPOSED PG&E GENERATION RATE	MCE GENERATION & PG&E FEES VS. PG&E GENERATION (negative % indicates savings with MCE)
AG-4-A, AG-4-D	AG-4-A									
	ENERGY CHARGE (\$/KWH)									
		<u>SUMMER</u>								
		PEAK	0.13700	0.02546	0.16246	0.15600	0.02652	0.18252	0.18347	-0.52%
		OFF-PEAK	0.04600	0.02546	0.07146	0.05200	0.02652	0.07852	0.07921	-0.87%
		<u>WINTER</u>								
		PART-PEAK	0.05100	0.02546	0.07646	0.05700	0.02652	0.08352	0.08394	-0.50%
		OFF-PEAK	0.04000	0.02546	0.06546	0.04500	0.02652	0.07152	0.07152	0.00%
	CONNECTED LOAD (\$/HP)									
		SUMMER	1.35000			1.55000			1.56	-0.64%
		WINTER	-			-				
AG-4-B, AG-4-E	AG-4-B									
	ENERGY CHARGE (\$/KWH)									
		<u>SUMMER</u>								
		PEAK	0.09900	0.02546	0.12446	0.11300	0.02652	0.13952	0.13991	-0.28%
		OFF-PEAK	0.04900	0.02546	0.07446	0.05400	0.02652	0.08052	0.0812	-0.84%
		<u>WINTER</u>								
		PART-PEAK	0.04600	0.02546	0.07146	0.05200	0.02652	0.07852	0.07918	-0.83%
		OFF-PEAK	0.03900	0.02546	0.06446	0.04100	0.02652	0.06752	0.06738	0.21%
	DEMAND CHARGE (\$/KW)									
		<u>SUMMER</u>								
		MAX	2.35000			2.74000			2.75	-0.36%
		PEAK	2.50000			2.91000			2.92	-0.34%
		WINTER	-			-				
AG-4-C, AG-4-F	AG-4-C									
	ENERGY CHARGE (\$/KWH)									
		<u>SUMMER</u>								
		PEAK	0.11600	0.02546	0.14146	0.13500	0.02652	0.16152	0.16183	-0.19%
		PART-PEAK	0.05600	0.02546	0.08146	0.06500	0.02652	0.09152	0.09162	-0.11%
		OFF-PEAK	0.03800	0.02546	0.06346	0.03900	0.02652	0.06552	0.0661	-0.88%
		<u>WINTER</u>								
		PART-PEAK	0.04100	0.02546	0.06646	0.04600	0.02652	0.07252	0.07334	-1.12%
		OFF-PEAK	0.03700	0.02546	0.06246	0.03600	0.02652	0.06252	0.06239	0.21%
	DEMAND CHARGE (\$/KW)									
		<u>SUMMER</u>								
		PEAK	5.90000			6.76000			6.79	-0.44%
		PART-PEAK	1.00000			1.15000			1.16	-0.86%
		WINTER	-			-				

MARIN CLEAN ENERGY

PROPOSED RATES AS OF JULY 1, 2019

PG&E EQUIVALENT SCHEDULE	MCE RATE SCHEDULE	UNIT/PERIOD	CURRENT MCE GENERATION RATE	CURRENT PG&E FEES (PCIA & FF)	CURRENT EFFECTIVE GENERATION RATE	PROPOSED MCE GENERATION RATE	PROPOSED PG&E FEES (PCIA & FF)	PROPOSED EFFECTIVE GENERATION RATE	PROPOSED PG&E GENERATION RATE	MCE GENERATION & PG&E FEES VS. PG&E GENERATION (negative % indicates savings with MCE)	
AG-5-A, AG-5-D	AG-5-A	ENERGY CHARGE (\$/KWH)									
		<u>SUMMER</u>									
		PEAK	0.12600	0.02546	0.15146	0.14300	0.02652	0.16952	0.17023	-0.42%	
		OFF-PEAK	0.05100	0.02546	0.07646	0.05700	0.02652	0.08352	0.08417	-0.77%	
		<u>WINTER</u>									
		PART-PEAK	0.05500	0.02546	0.08046	0.06100	0.02652	0.08752	0.08815	-0.71%	
		OFF-PEAK	0.04400	0.02546	0.06946	0.04800	0.02652	0.07452	0.07518	-0.88%	
		CONNECTED LOAD (\$/HP)									
		SUMMER	3.70000			4.22000			4.24		-0.47%
		WINTER	-			-					
		AG-5-B, AG-5-E	AG-5-B	ENERGY CHARGE (\$/KWH)							
<u>SUMMER</u>											
PEAK	0.11000			0.02546	0.13546	0.14100	0.02652	0.16752	0.16834	-0.49%	
OFF-PEAK	0.03200			0.02546	0.05746	0.03000	0.02652	0.05652	0.05659	-0.12%	
<u>WINTER</u>											
PART-PEAK	0.04500			0.02546	0.07046	0.05300	0.02652	0.07952	0.07989	-0.46%	
OFF-PEAK	0.02800			0.02546	0.05346	0.02000	0.02652	0.04652	0.04696	-0.94%	
DEMAND CHARGE (\$/KW)											
<u>SUMMER</u>											
MAX	4.45000					5.13000			5.16		-0.58%
PEAK	5.55000					6.42000			6.45		-0.47%
WINTER	-			-							
AG-5-C, AG-5-F	AG-5-C	ENERGY CHARGE (\$/KWH)									
		<u>SUMMER</u>									
		PEAK	0.09000	0.02546	0.11546	0.11200	0.02652	0.13852	0.13949	-0.70%	
		PART-PEAK	0.04500	0.02546	0.07046	0.05400	0.02652	0.08052	0.08054	-0.02%	
		OFF-PEAK	0.03200	0.02546	0.05746	0.03200	0.02652	0.05852	0.0586	-0.14%	
		<u>WINTER</u>									
		PART-PEAK	0.03700	0.02546	0.06246	0.03800	0.02652	0.06452	0.06518	-1.01%	
		OFF-PEAK	0.03000	0.02546	0.05546	0.02800	0.02652	0.05452	0.0552	-1.23%	
		DEMAND CHARGE (\$/KW)									
		<u>SUMMER</u>									
		PEAK	10.30000			11.91000			11.97		-0.50%
PART-PEAK	1.90000			2.24000			2.25		-0.44%		
WINTER	-			-							

MARIN CLEAN ENERGY

PROPOSED RATES AS OF JULY 1, 2019

PG&E EQUIVALENT SCHEDULE	MCE RATE SCHEDULE	UNIT/PERIOD	CURRENT MCE GENERATION RATE	CURRENT PG&E FEES (PCIA & FF)	CURRENT EFFECTIVE GENERATION RATE	PROPOSED MCE GENERATION RATE	PROPOSED PG&E FEES (PCIA & FF)	PROPOSED EFFECTIVE GENERATION RATE	PROPOSED PG&E GENERATION RATE	MCE GENERATION & PG&E FEES VS. PG&E GENERATION (negative % indicates savings with MCE)
<u>STREET AND OUTDOOR LIGHTING</u>										
LS-1, LS-2, LS-3, OL-1	SL									
	ENERGY CHARGE (\$/KWH)		0.07500	0.00658	0.08158	0.06800	0.02461	0.09261	0.09278	-0.18%
TC-1	TC-1									
	ENERGY CHARGE (\$/KWH)		0.06400	0.02559	0.08959	0.07300	0.02993	0.10293	0.10350	-0.55%
<u>DEEP GREEN OPTION</u>										
Customers electing the Deep Green service option will pay the applicable rate for the Light Green service option plus the Deep Green Energy Charge.										
	ENERGY CHARGE (\$/KWH)		0.01000			0.01000				
<u>LOCAL SOL OPTION</u>										
For customers taking service under the Local Sol service option, the MCE generation charges of the participating customer's otherwise applicable tariff will be replaced with the following Local Sol Rate:										
	ENERGY CHARGE (\$/KWH)		0.14200			0.14200				
<u>Voltage Discount</u>										
For rate schedules not segregated by service voltage, each component of the standard rate shall be discounted for primary or higher service voltage.										
			4%			4%				



DRAFT

**Board of Directors Meeting
Thursday, June 20, 2019
7:00 P.M.**

**Charles F. McGlashan Board Room, 1125 Tamalpais Avenue, San Rafael, CA 94901
Mt. Diablo Room, 2300 Clayton Road, Suite 1150, Concord, CA 94920**

Agenda Page 1 of 1

Swearing in of New Board Members

1. Roll Call/Quorum
2. Board Announcements (Discussion)
3. Public Open Time (Discussion)
4. Report from Chief Executive Officer (Discussion)
5. Consent Calendar (Discussion/Action)
 - C.1 Approval of 3.21.19 Meeting Minutes
 - C.2 Approved Contracts Update
 - C.3 Updated MCE Voting Shares
 - C.4 Resolution 2019-XX Amending MCE's Conflict of Interest Code
 - C.5 Professional Services Agreement with Mogo Marketing and Media
6. De-energizing, Critical Facilities and Emergency Alert Systems (Discussion)
7. Proposed MCE Rate Changes for July 1, 2019 (Discussion/Action)
8. Regulatory and Legislative Updates (Discussion)
9. Board Matters & Staff Matters (Discussion)
10. Adjourn

